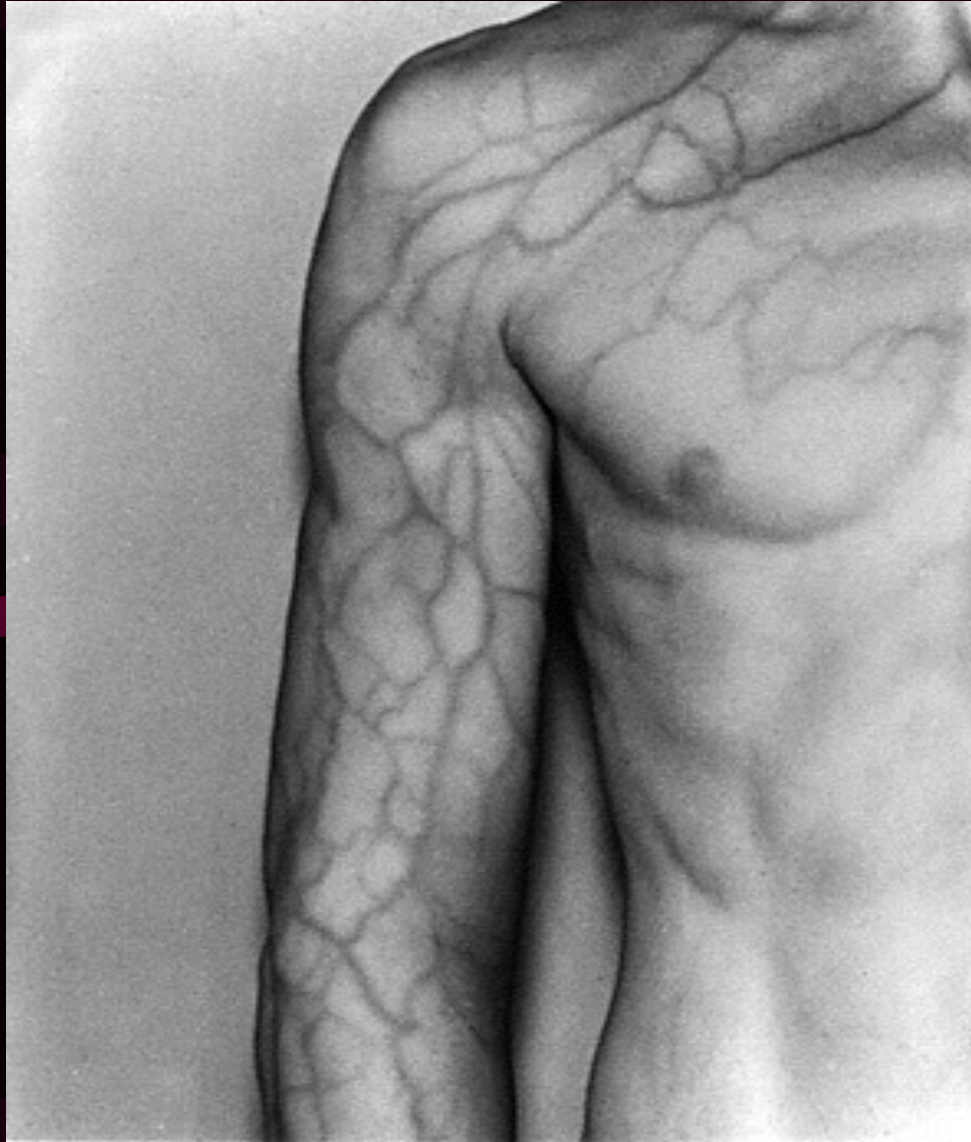


# BLOOD VESSELS



<http://www.innerbody.com/htm/body.html>

# ARTERIES

FUNCTION – CARRY BLOOD AWAY FROM THE HEART

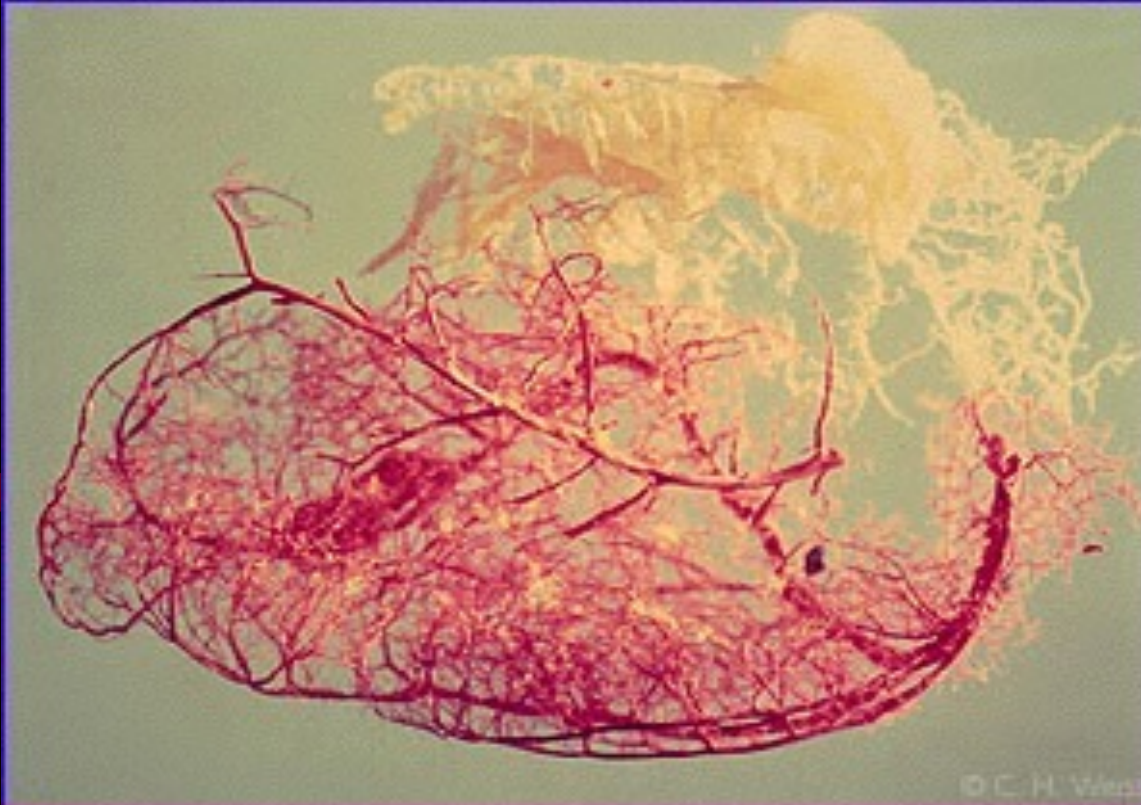
## CHARACTERISTICS

- **VERY THICK**, MUSCULAR WALLS (WHY). FIGURE 8 PG. 546
- VERY HIGH BLOOD PRESSURE
- **CARRIES OXYGENATED BLOOD (WITH 1 EXCEPTION)**
- EXAMPLES – CORONARY, AORTA, CAROTID, FEMORAL
- *WHY ARE YOU SUPPOSED TO WAIT ½ HOUR – 1 HOUR AFTER YOU EAT BEFORE YOU GO SWIMMING?*

# ARTERIES



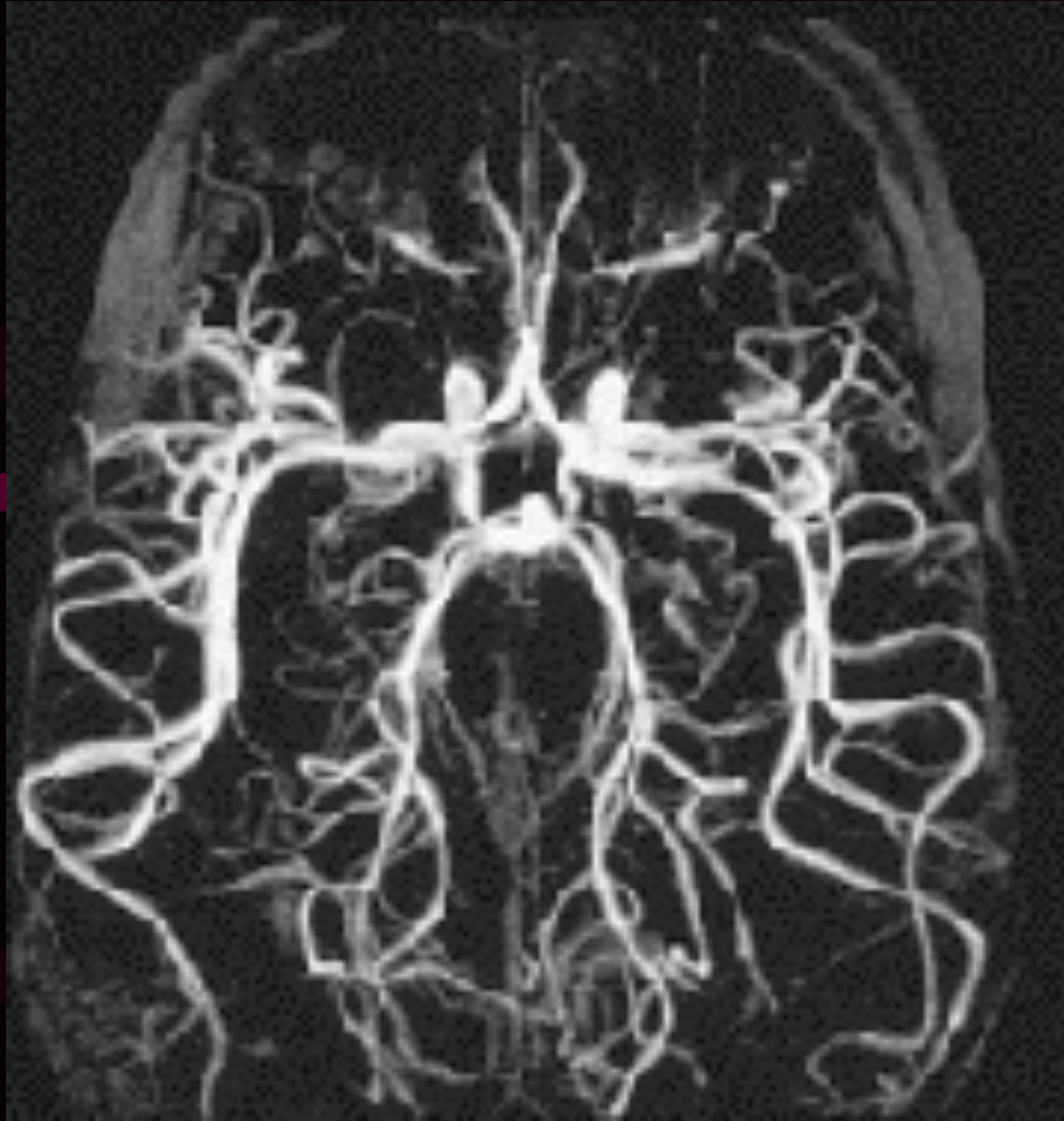
# CORONARY ARTERIES



*Coronary arteries are the network of blood vessels that supply the heart. In this photograph, the left coronary artery has been injected with a red dye, and the right coronary artery with white.*



# ARTERIES IN BRAIN



# VEINS

**FUNCTION** – AFTER BLOOD MOVES THROUGH THE ARTERIES IT ENTERS LARGER BLOOD VESSELS CALLED VEINS, WHICH CARRY BLOOD BACK TO THE HEART.

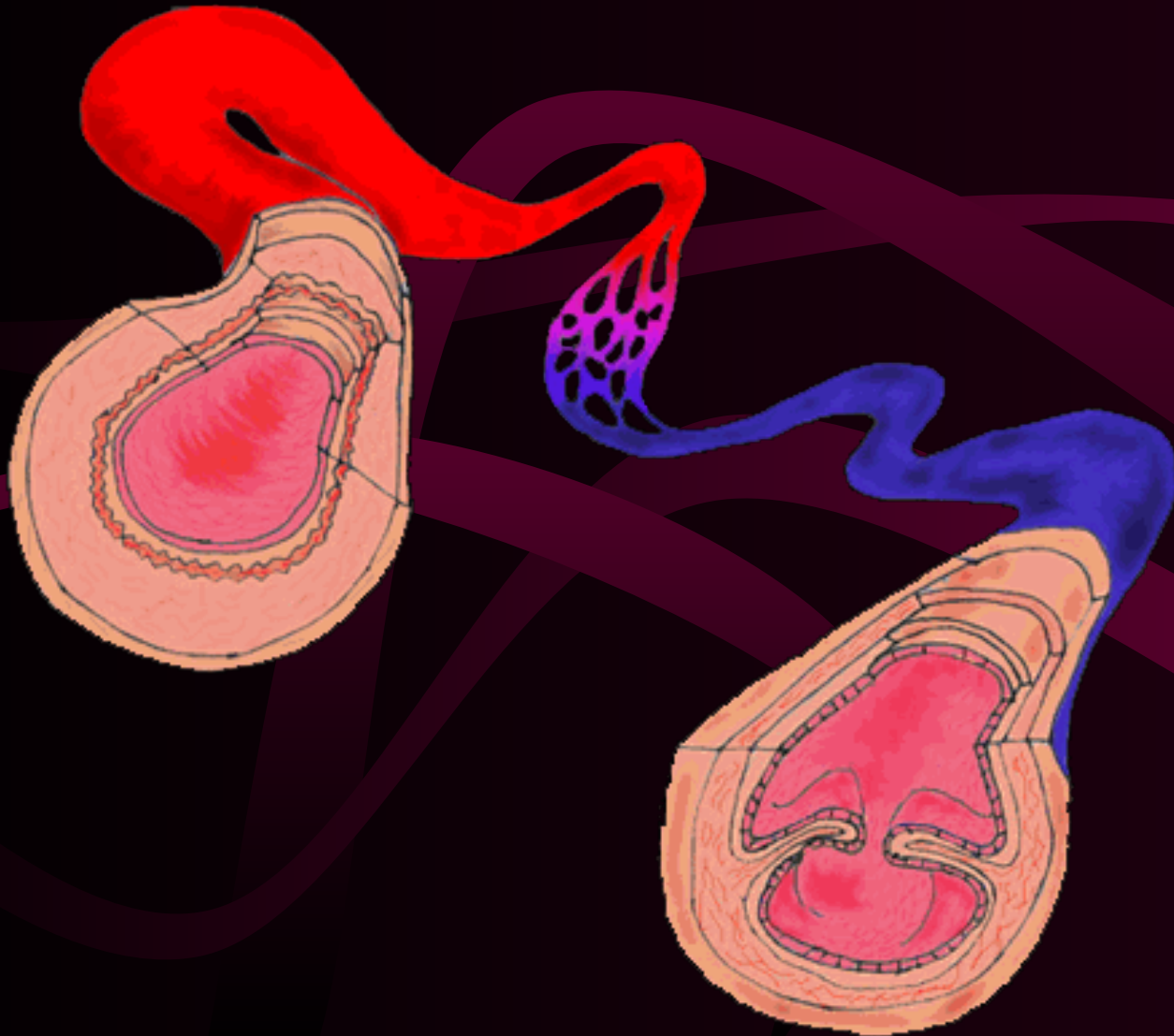
## CHARACTERISTICS

- THINNER WALLS WITH LESS MUSCLE
- HAVE VALVES (WHY)
- CARRIES DEOXYGENATED BLOOD (1 EXCEPTION)
- EXAMPLES – VENA CAVA, JUGULAR,
- LOCATION – NEAR MUSCLES (WHY)

# VEINS



# VEINS VS. ARTERIES





# VEINS



<http://www.innerbody.com/htm/body.html>

# SPIDER VEINS



# RETICULAR VEINS



# VERICOSE VEINS







# CAPILLARIES

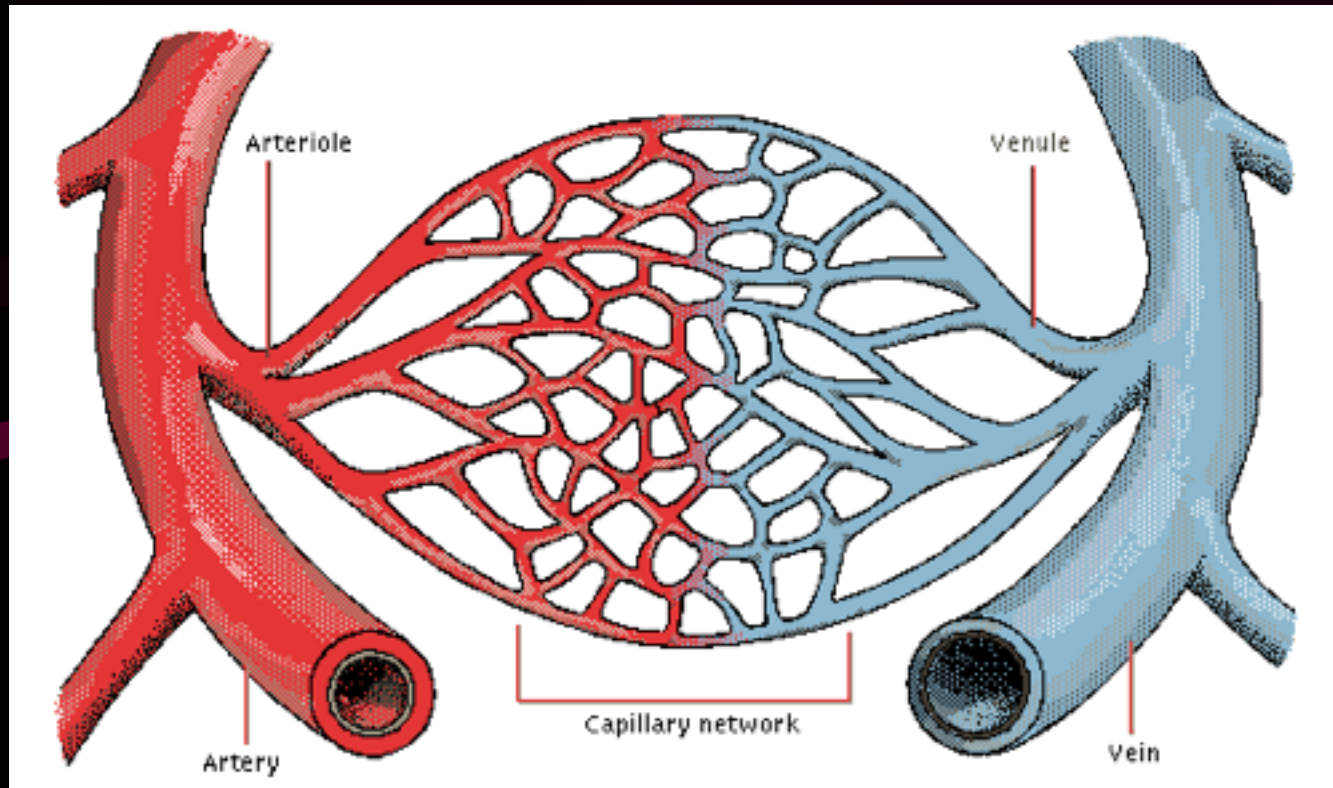
FUNCTION: WHERE MATERIAL (OXYGEN, NUTRIENTS, CARBON DIOXIDE, ENERGY) IS EXCHANGED BETWEEN BLOOD AND CELLS

## CHARACTERISTICS

- VERY SMALL
- WALLS ARE ONLY ONE CELL THICK
- DIFFUSION TAKES PLACE
- MOST ABUNDANT
- FOUND NEAR MUSCLE CELLS, ORGANS, ETC.

<http://www.innerbody.com/htm/body.html>

# CAPILLARIES



<http://www.innerbody.com/htm/body.html>