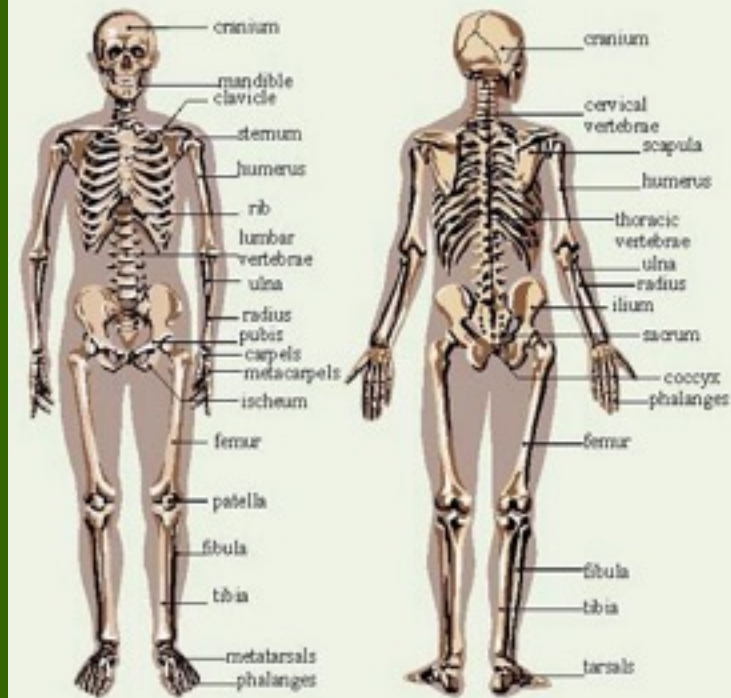


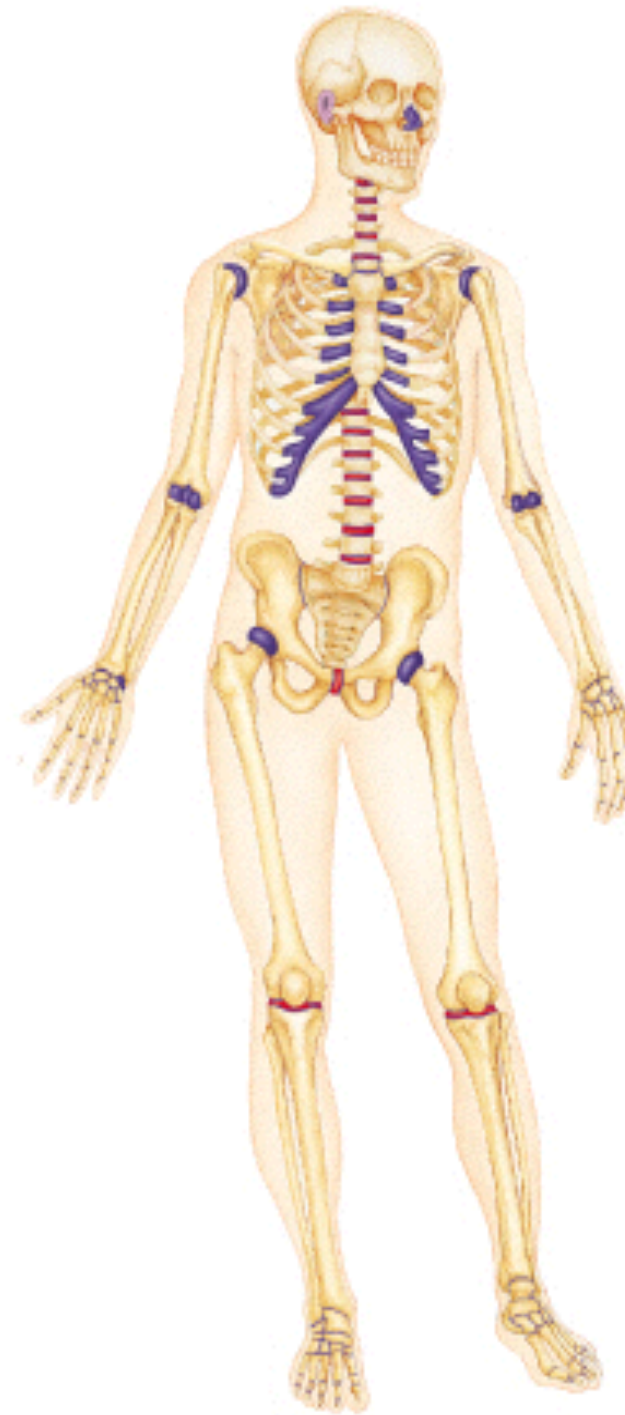
# Skeletal System

- Composed of the body's bones and associated ligaments, tendons, and cartilages.
- Functions:
  1. **Support**
    - The bones of the legs, pelvic girdle, and vertebral column support the weight of the erect body.
    - The mandible (jawbone) supports the teeth.
    - Other bones support various organs and tissues.
  2. **Protection**
    - The bones of the skull protect the brain.
    - Ribs and sternum (breastbone) protect the lungs and heart.
    - Vertebrae protect the spinal cord.



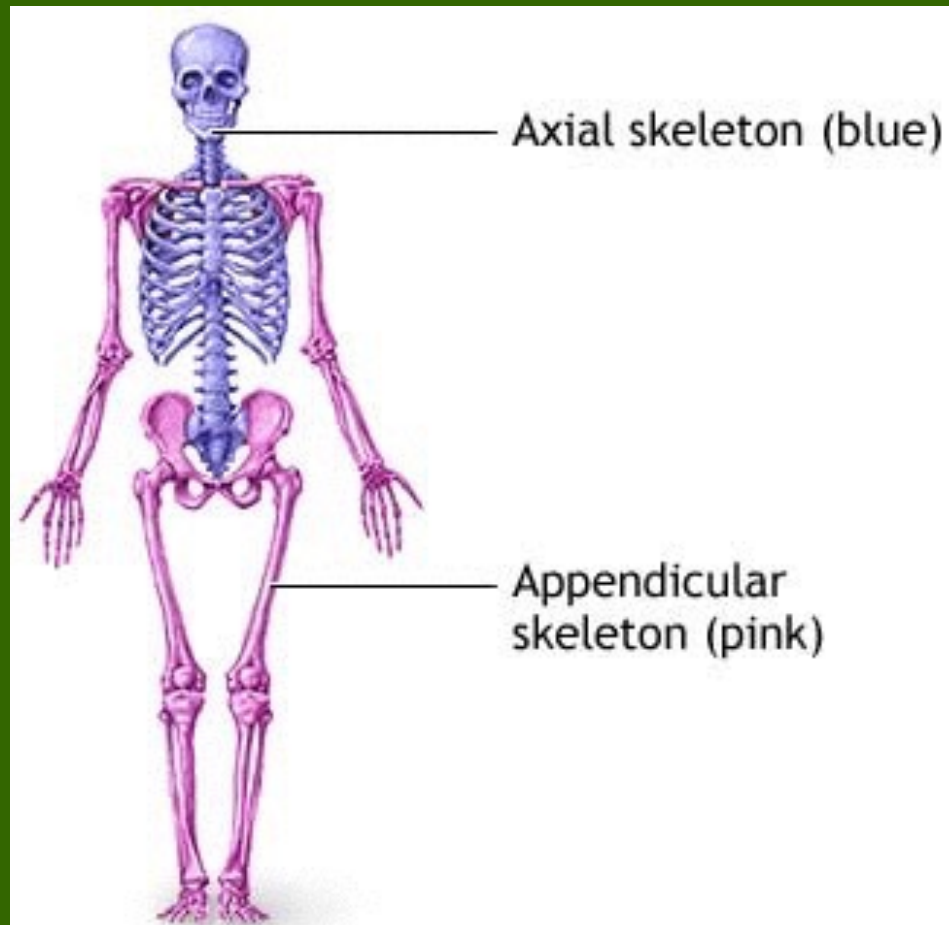
# Skeletal System

- Functions:
  3. **Movement**
    - Skeletal muscles use the bones as levers to move the body.
  4. **Reservoir for minerals and adipose tissue**
    - 99% of the body's calcium is stored in bone.
    - 85% of the body's phosphorous is stored in bone.
    - Adipose tissue is found in the marrow of certain bones.
      - What is really being stored in this case? (*hint – it starts with an E*)
  5. **Hematopoiesis**
    - A.k.a. blood cell formation.
    - All blood cells are made in the marrow of certain bones.



# Bone Classification

- There are 206 named bones in the human body.
- Each belongs to one of 2 large groups:
  - **Axial skeleton**
    - Forms long axis of the body.
    - Includes the bones of the skull, vertebral column, and rib cage.
    - These bones are involved in protection, support, and carrying other body parts.
  - **Appendicular skeleton**
    - Bones of upper & lower limbs and the girdles (shoulder bones and hip bones) that attach them to the axial skeleton.
    - Involved in locomotion and manipulation of the environment.

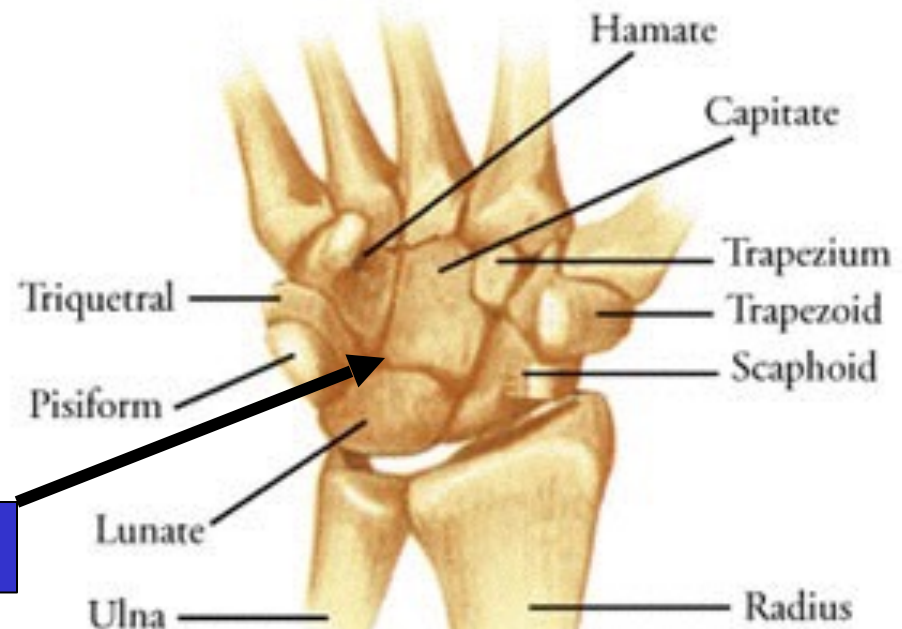


# Bone Classification

Femur →



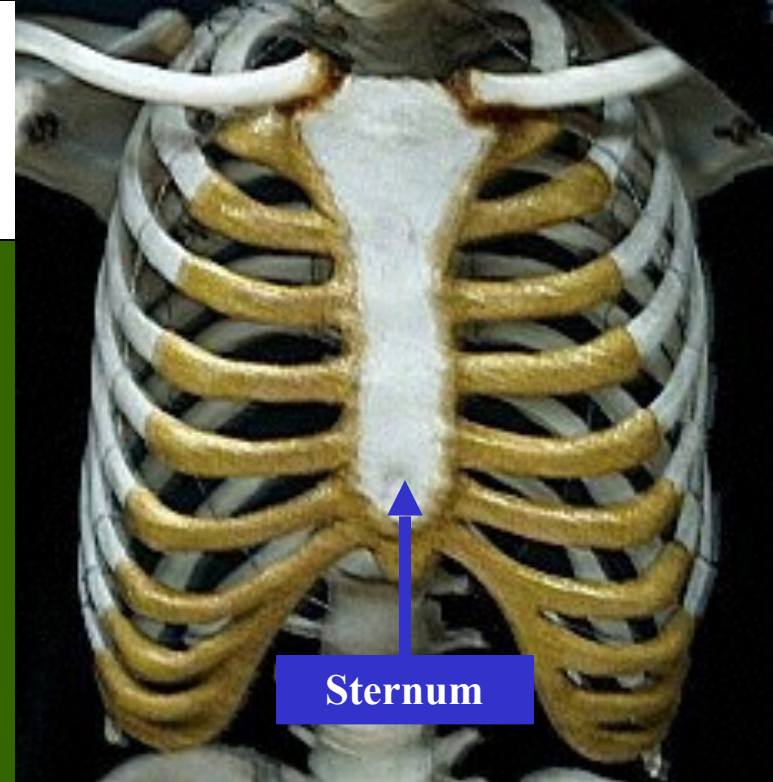
- 4 types of bones:
  1. **Long Bones**
    - Much longer than they are wide.
    - All bones of the limbs except for the patella (kneecap), and the bones of the wrist and ankle.
    - Consists of a shaft plus 2 expanded ends.
    - Your finger bones are long bones even though they're very short – how can this be?
  2. **Short Bones**
    - Roughly cube shaped.
    - Bones of the wrist and the ankle.



Carpal Bones

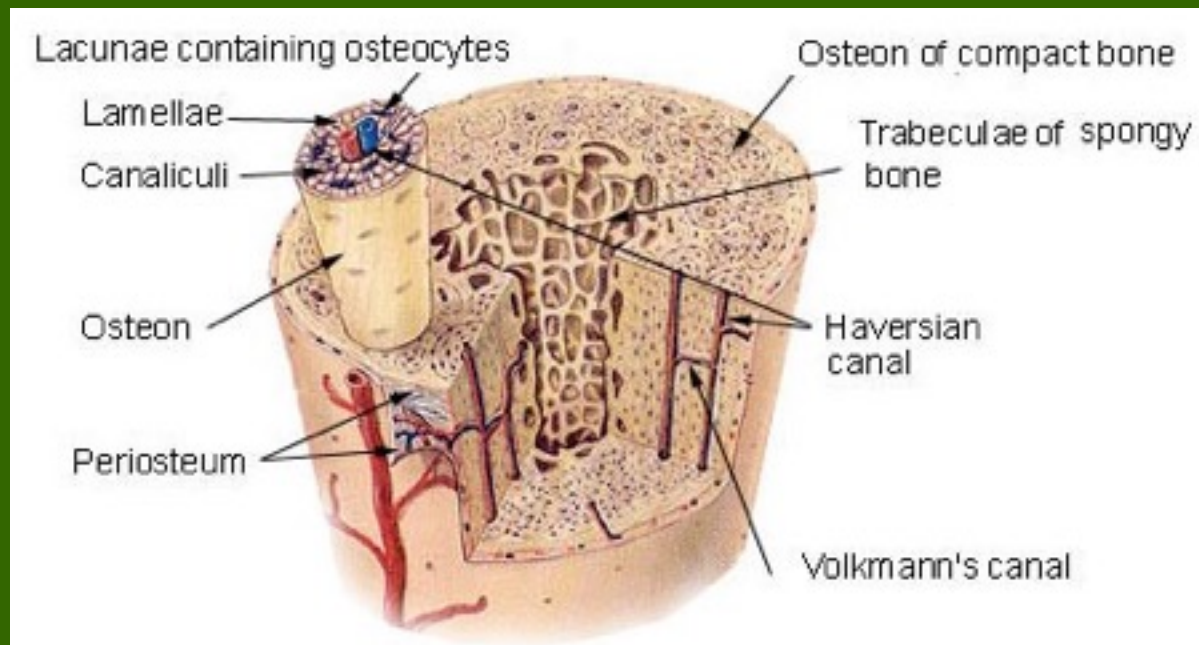
# Bone Classification

- Types of bones:
  3. Flat Bones
    - Thin, flattened, and usually a bit curved.
    - Scapulae, sternum, (shoulder blades), ribs and most bones of the skull.
  4. Irregular Bones
    - Have weird shapes that fit none of the 3 previous classes.
    - Vertebrae, hip bones, 2 skull bones ( sphenoid and the ethmoid bones).

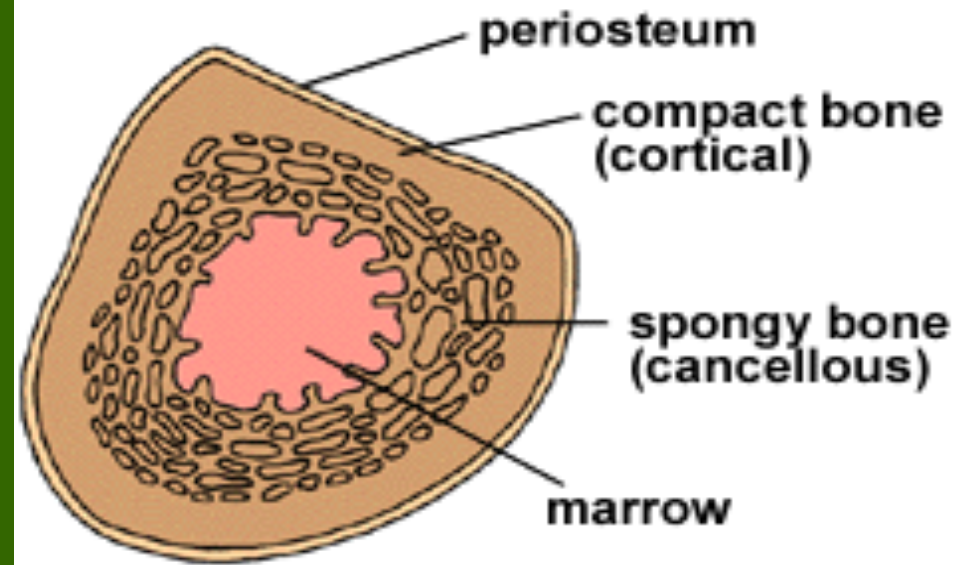


# Bone Structure

- Bones are organs. Thus, they're composed of multiple tissue types. Bones are composed of:
  - Bone tissue (a.k.a. osseous tissue).
  - **Fibrous connective tissue.**
  - **Cartilage.**
  - **Vascular tissue.**
  - Lymphatic tissue.
  - Adipose tissue.
  - Nervous tissue.

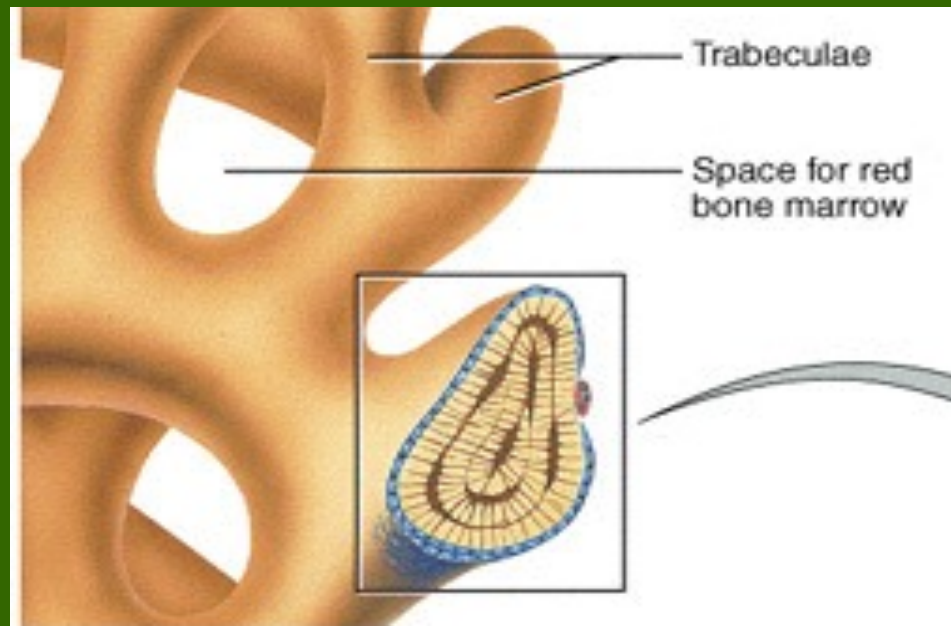


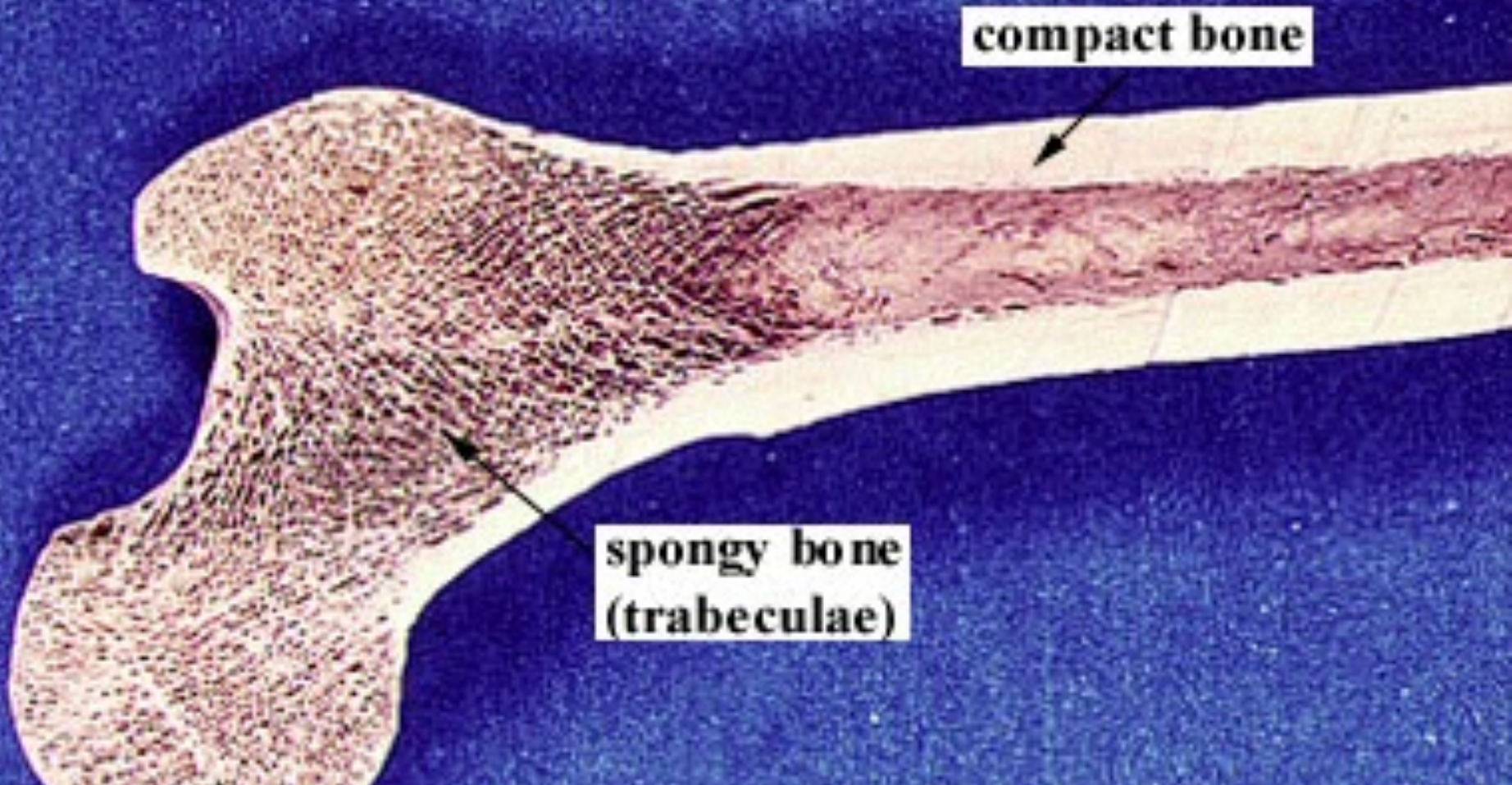
- All bones consist of a dense, solid outer layer known as **compact bone** and an inner layer of **spongy bone** – a honeycomb of flat, needle-like projections called *trabeculae*.
- Bone is an extremely dynamic tissue!!!!



*Above:* Note the relationship btwn the compact and spongy bone.

*Below:* Close up of spongy bone.



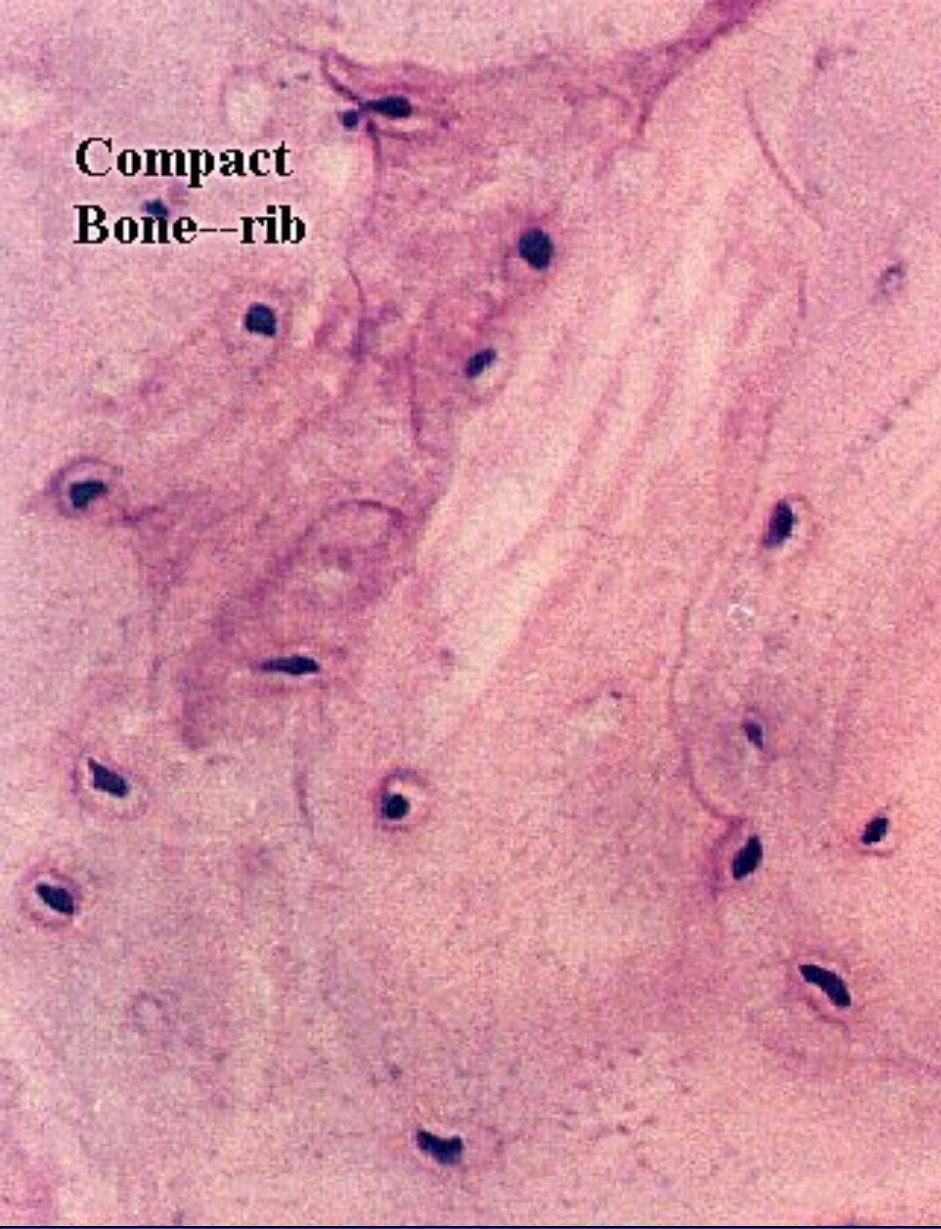


Note the gross differences between the spongy bone and the compact bone in the above photo.

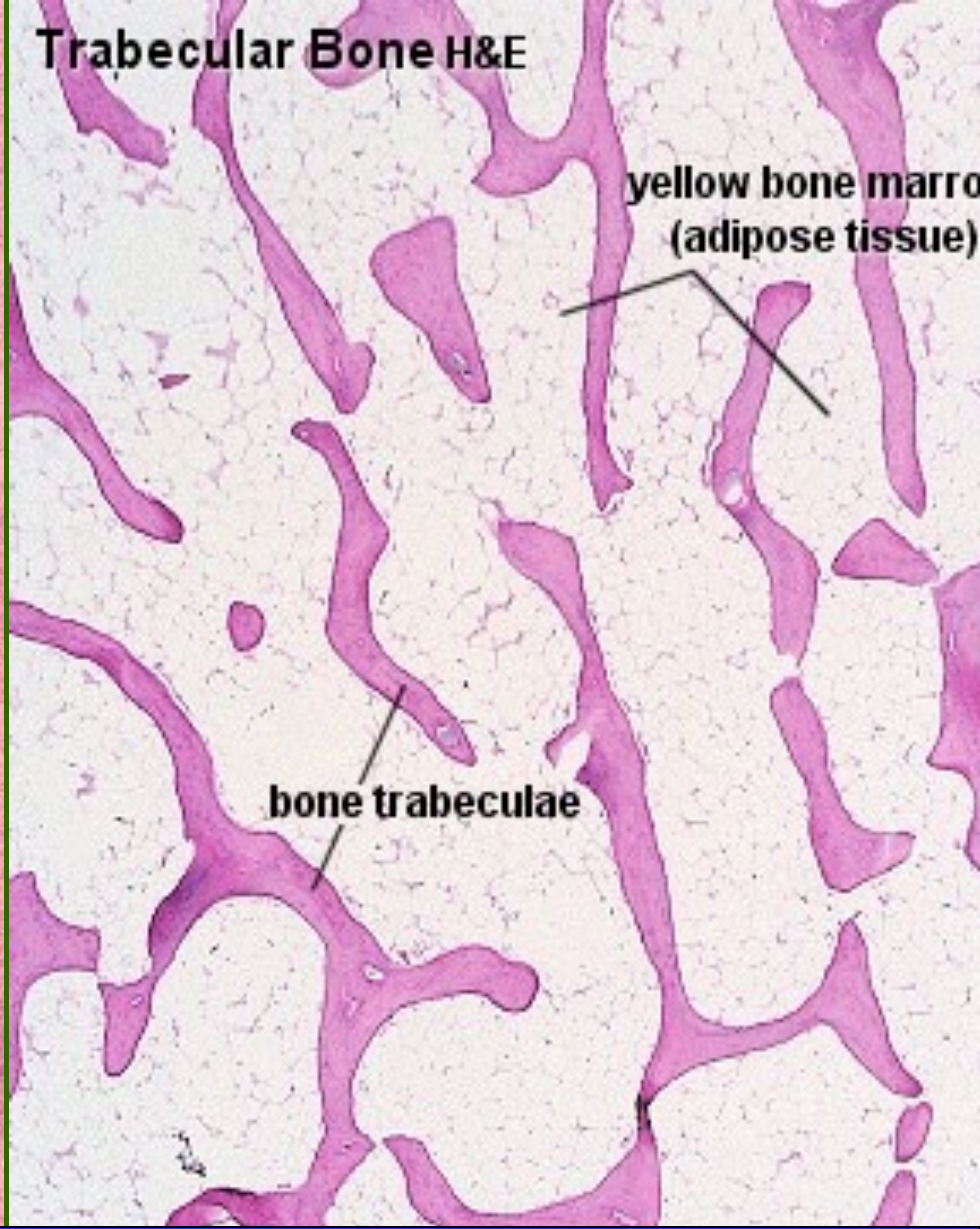
*Do you see the trabeculae?*



**Compact  
Bone--rib**



**Trabecular Bone H&E**



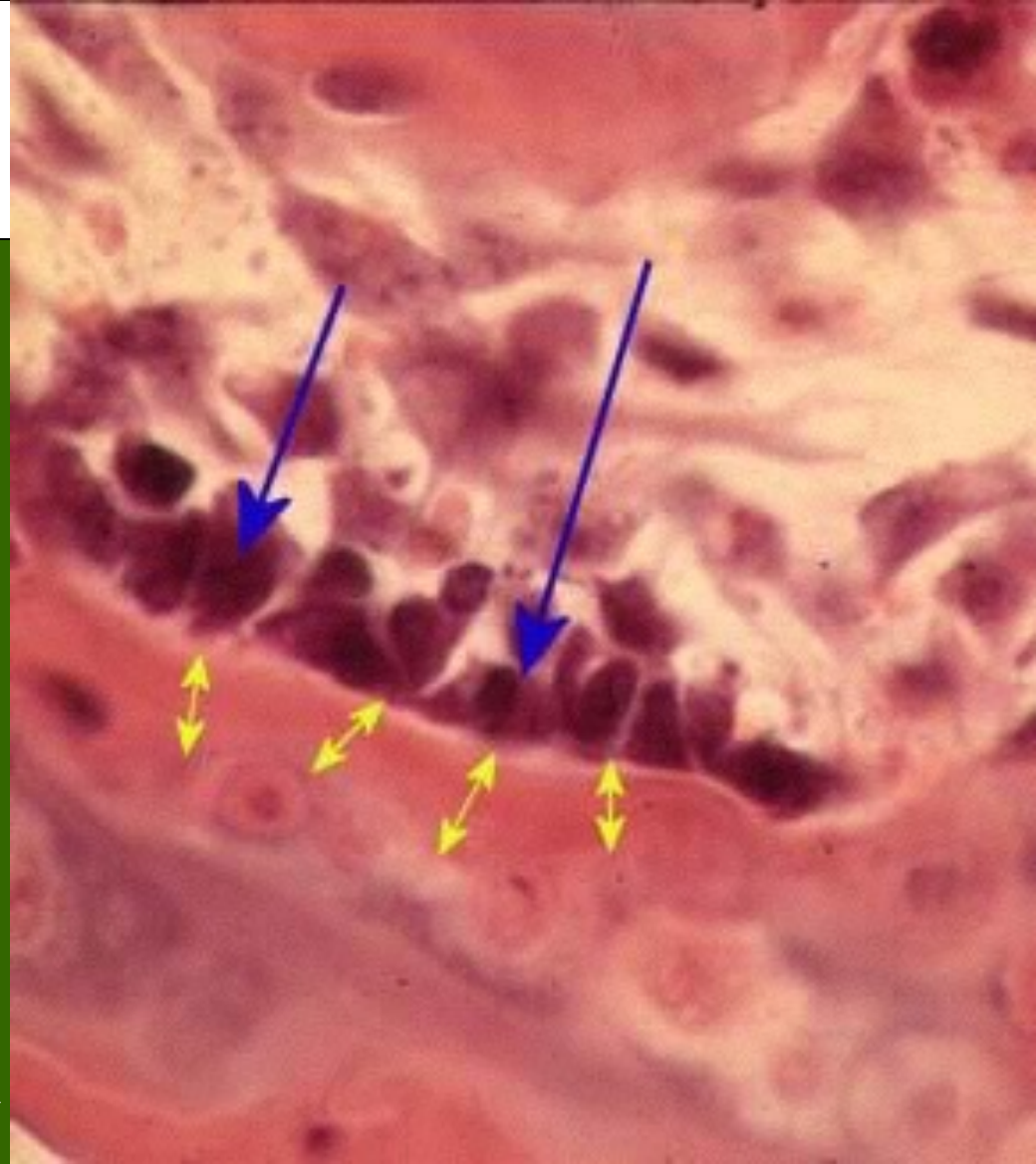
**yellow bone marrow  
(adipose tissue)**

**bone trabeculae**

Compare compact and spongy bone as viewed with the light microscope

# Bone Structure

- Bone tissue is a type of connective tissue, so it must consist of cells plus a significant amount of extracellular matrix.
- Bone cells:
  1. **Osteoblasts**
    - Bone-building cells.
    - Synthesize and secrete collagen fibers and other organic components of bone matrix.
    - Initiate the process of calcification.
    - Found in both the periosteum and the endosteum

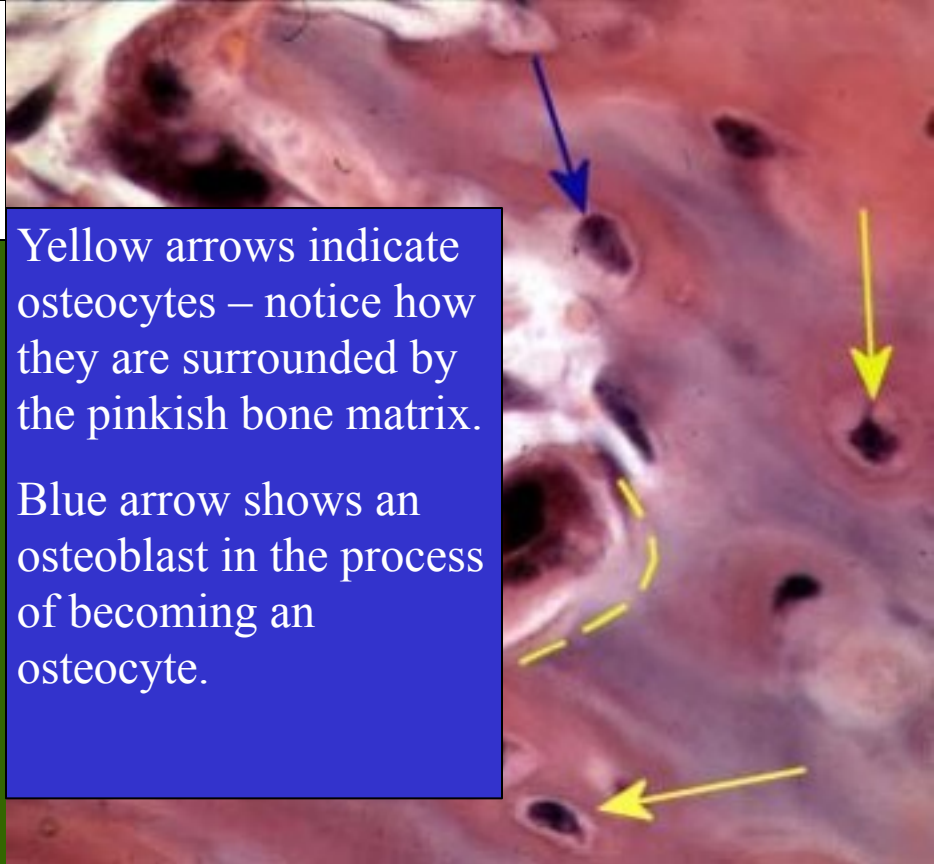


The blue arrows indicate the osteoblasts. The yellow arrows indicate the bone matrix they've just secreted.

# Bone Structure

## 2. Osteocytes

- Mature bone cells.
- Osteoblasts that have become trapped by the secretion of matrix.
- No longer secrete matrix.
- Responsible for maintaining the bone tissue.



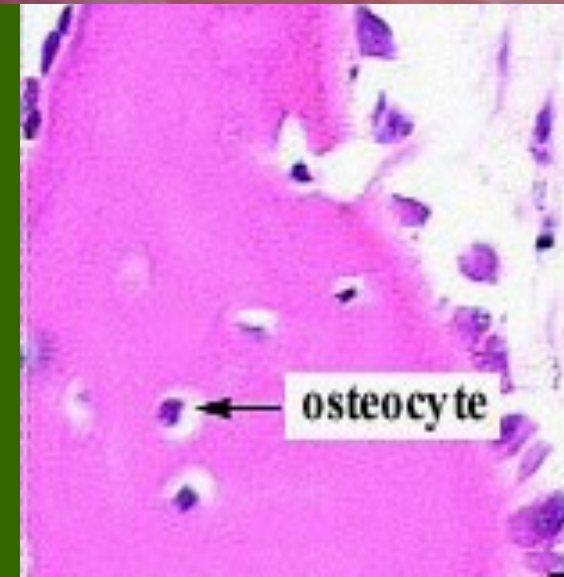
Yellow arrows indicate osteocytes – notice how they are surrounded by the pinkish bone matrix.

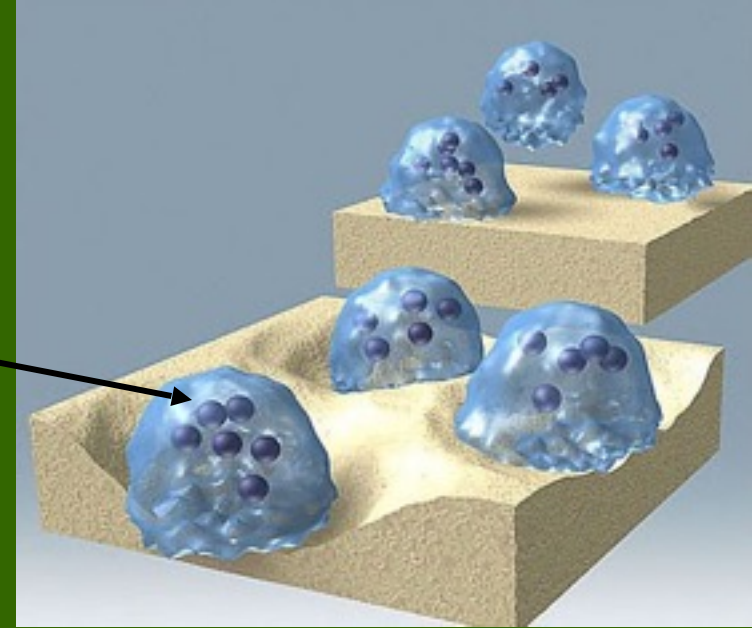
Blue arrow shows an osteoblast in the process of becoming an osteocyte.

This micrograph shows a section of bone tissue. A blue arrow points to a cell on the left, which is an osteoblast. Several yellow arrows point to other cells, which are osteocytes, embedded within a pinkish matrix. A dashed yellow line is also visible in the lower-left quadrant.

Blue arrow shows an osteoblast in the process of becoming an osteocyte.

On the right, notice how the osteocyte is “trapped” within the pink matrix

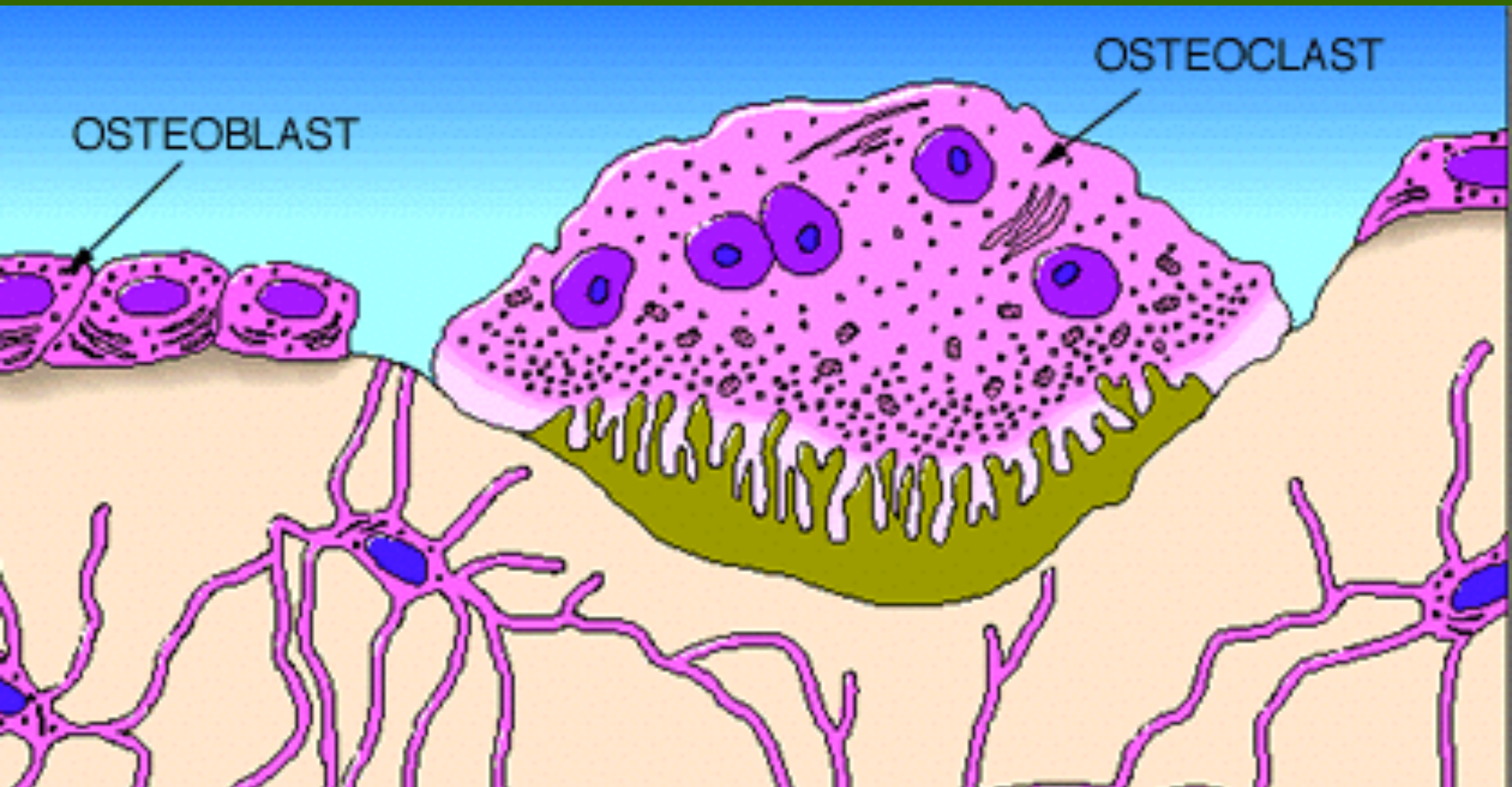




### 3. Osteoclasts

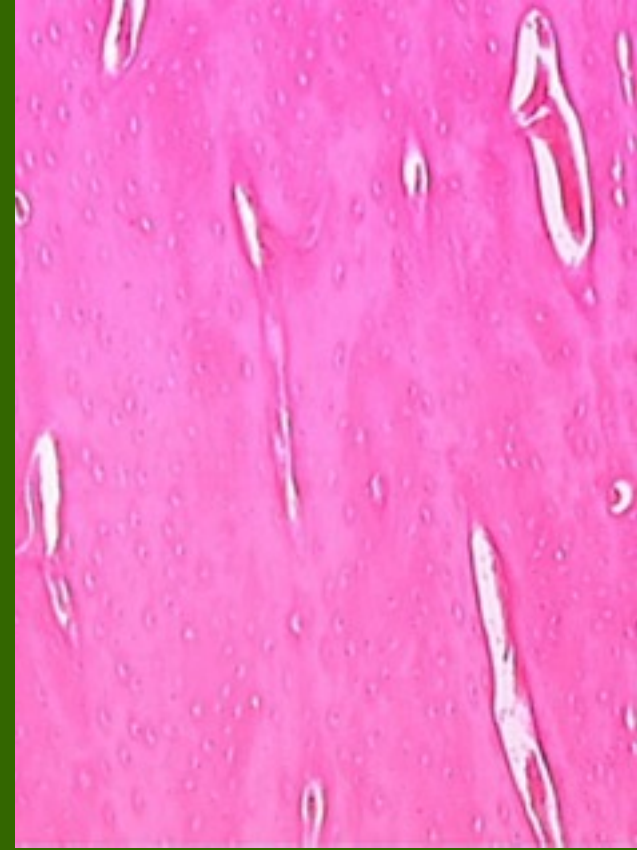
- Huge cells derived from the fusion of as many as 50 monocytes (a type of white blood cell).
- Cells that digest bone matrix – this process is called bone resorption and is part of normal bone growth, development, maintenance, and repair.
- Concentrated in the endosteum.
- On the side of the cell that faces the bone surface, the PM is deeply folded into a ruffled border. Here, the osteoclast secretes digestive enzymes (*how might this occur?*) to digest the bone matrix. It also pumps out hydrogen ions (*how might this occur?*) to create an acid environment that eats away at the matrix. *What advantage might a ruffled border confer?*
- Why do we want a cell that eats away at bone? (Hint: bone is a very dynamic tissue.)

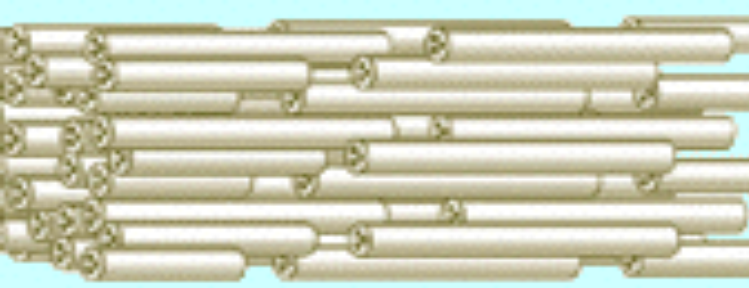
- Here, we see a cartoon showing all 3 cell types. Osteoblasts and osteoclasts are indicated.
- Note the size of the osteoclast (compare it to the osteoblast), and note the ruffled border.
- Why is there a depression underneath the osteoclast?
- What is the name of the third cell type shown here?
- What do you think the tan material represents?



# Bone Structure

- Bone Matrix:
  - Consists of organic and inorganic components.
  - 1/3 organic and 2/3 inorganic by weight.
    - Organic component consists of several materials that are secreted by the osteoblasts:
      - Collagen fibers and other organic materials
        - » These (particularly the collagen) provide the bone with resilience and the ability to resist stretching and twisting.

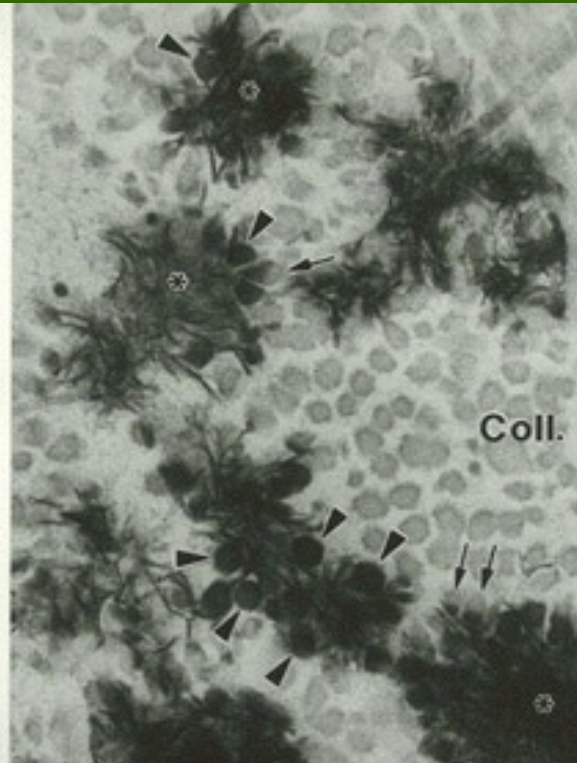
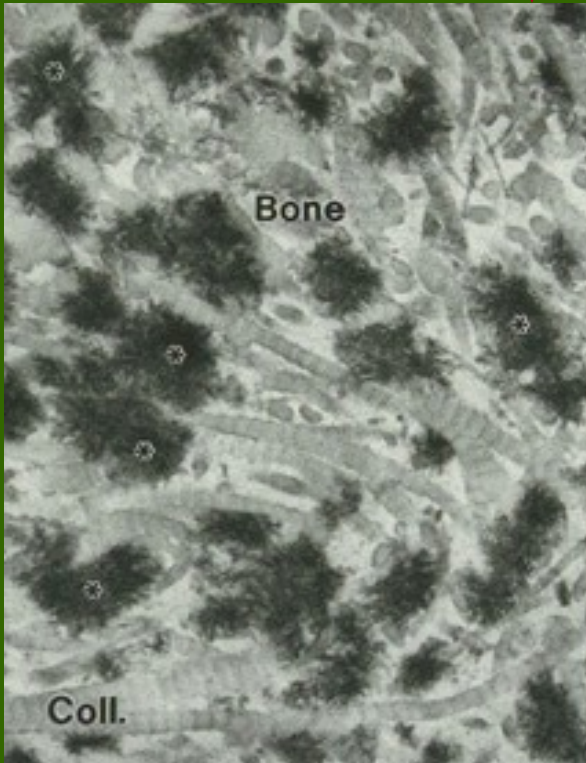




Three-dimensional array of collagen molecules. The rod-shaped molecules lie in a staggered arrangement which acts as a template for bone mineralization. Bone mineral is laid down in the gaps.

- Inorganic component of bone matrix
  - Consists mainly of 2 salts: calcium phosphate and calcium hydroxide. These 2 salts interact to form a compound called **hydroxyapatite**.
  - Bone also contains smaller amounts of magnesium, fluoride, and sodium.
  - These minerals give bone its characteristic hardness and the ability to resist compression.

Note collagen fibers in longitudinal & cross section and how they occupy space btwn the black bone cells.





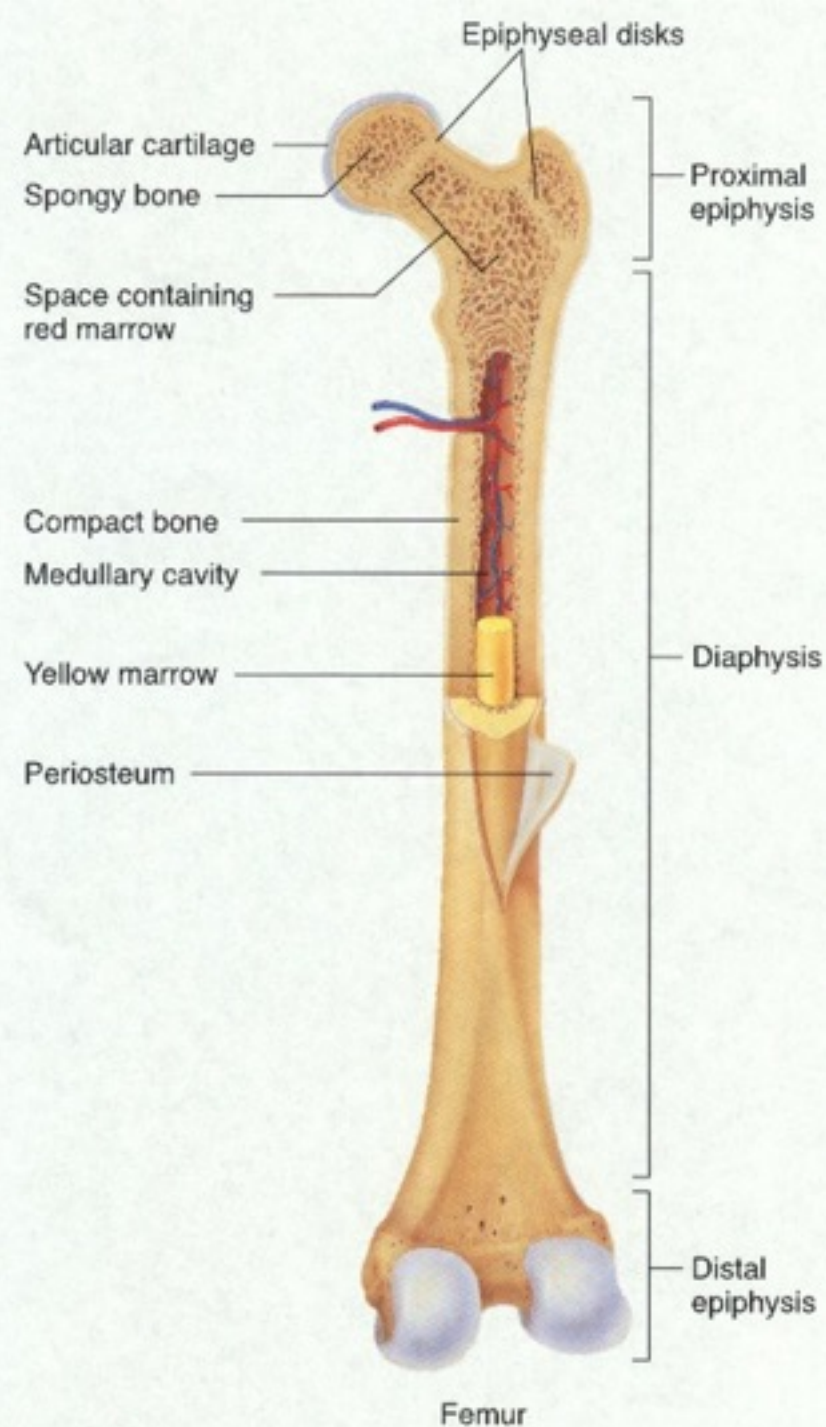
This bone:

- a. Has been demineralized
- b. Has had its organic component removed



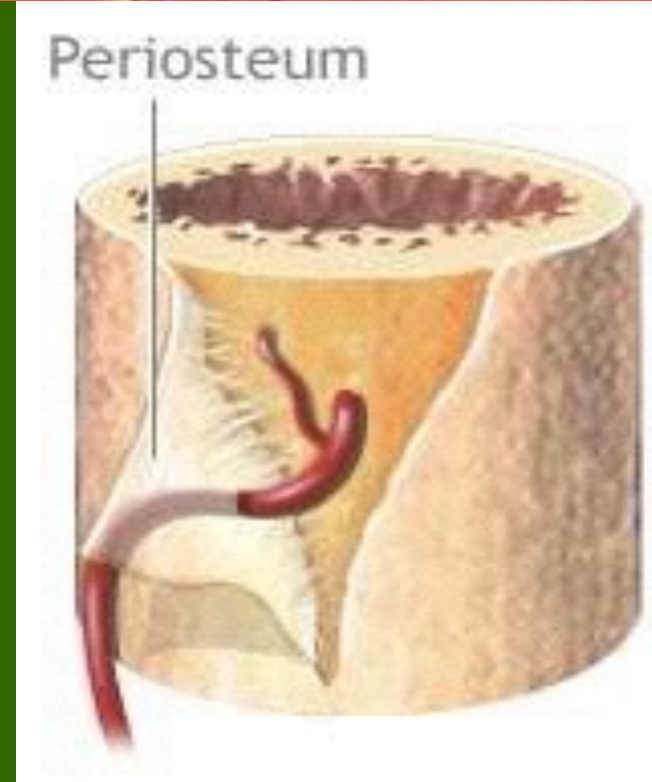
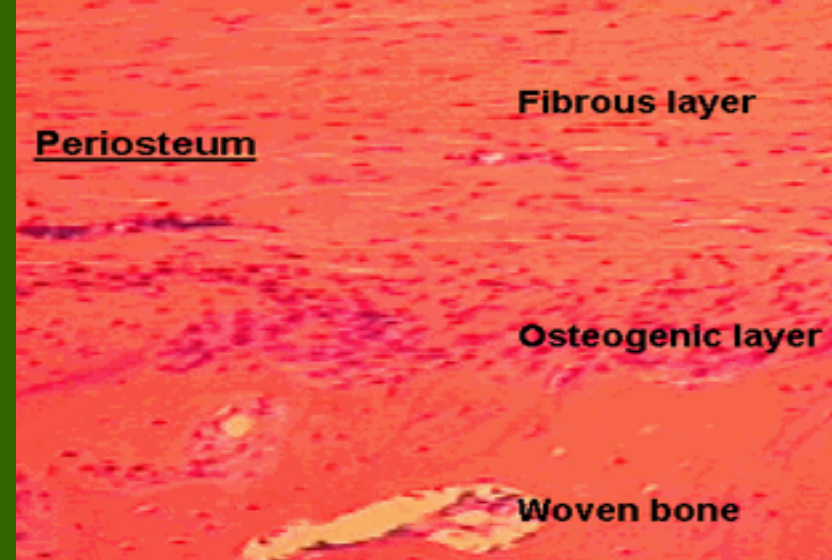
# Long Bone Structure

- Shaft plus 2 expanded ends.
- Shaft is known as the diaphysis.
  - Consists of a thick collar of compact bone surrounding a central marrow cavity
    - In adults, the marrow cavity contains fat - yellow bone marrow.
- Expanded ends are epiphyses
  - Thin layer of compact bone covering an interior of spongy bone.
  - Joint surface of each epiphysis is covered w/ a type of hyaline cartilage known as articular cartilage. It cushions the bone ends and reduces friction during movement.

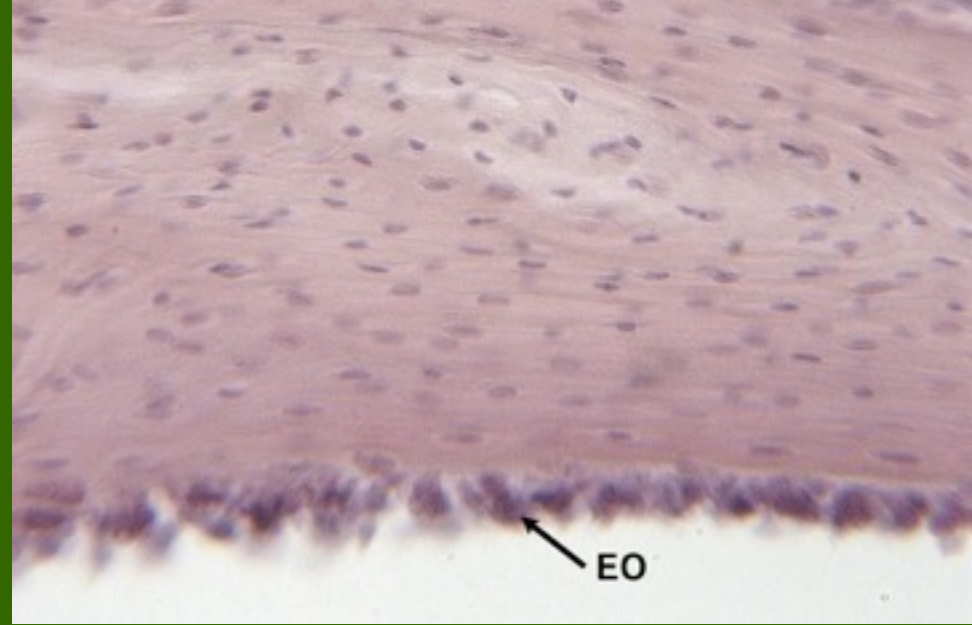


# Long Bone Structure

- The external surface of the entire bone except for the joint surfaces of the epiphyses is covered by a double-layered membrane known as the periosteum.
  - Outer fibrous layer is dense irregular connective tissue.
  - Inner cellular layer contains osteoprogenitor cells and osteoblasts.
  - Periosteum is richly supplied with nerve fibers, lymphatic vessels and blood vessels.
    - These enter the bone of the shaft via a **nutrient foramen**.
  - Periosteum is connected to the bone matrix via strong strands of collagen.



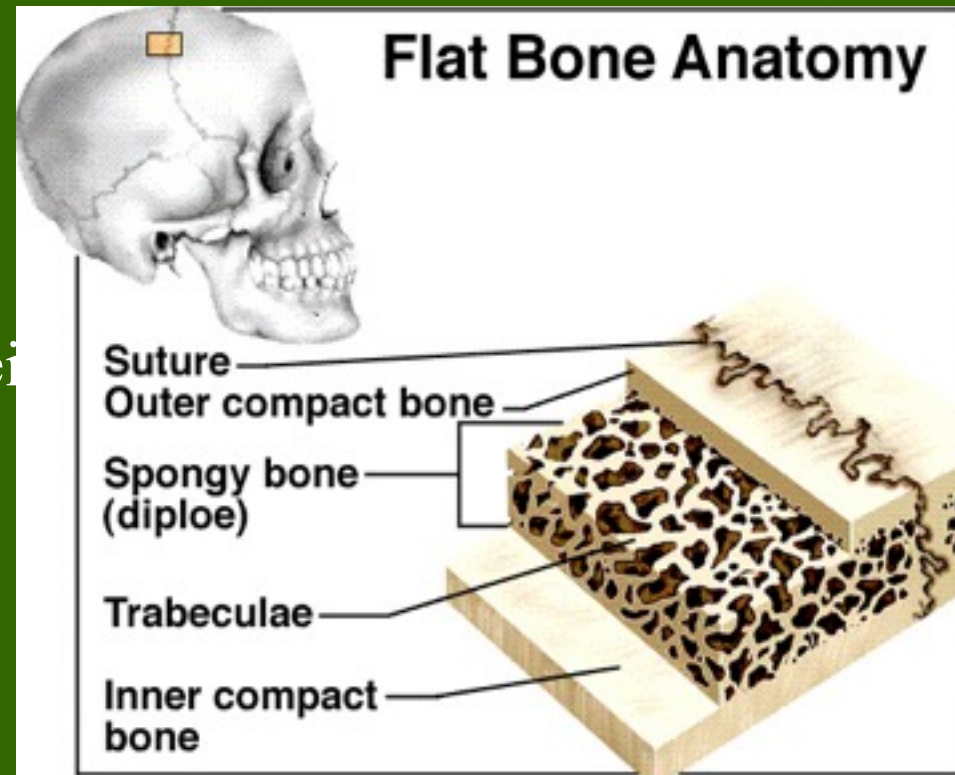
# Long Bone Structure



- Internal bone surfaces are covered with a delicate connective tissue membrane known as the **endosteum**.
  - Covers the trabeculae of spongy bone in the marrow cavities and lines the canals that pass through compact bone.
  - Contains both osteoblasts and osteoclasts.

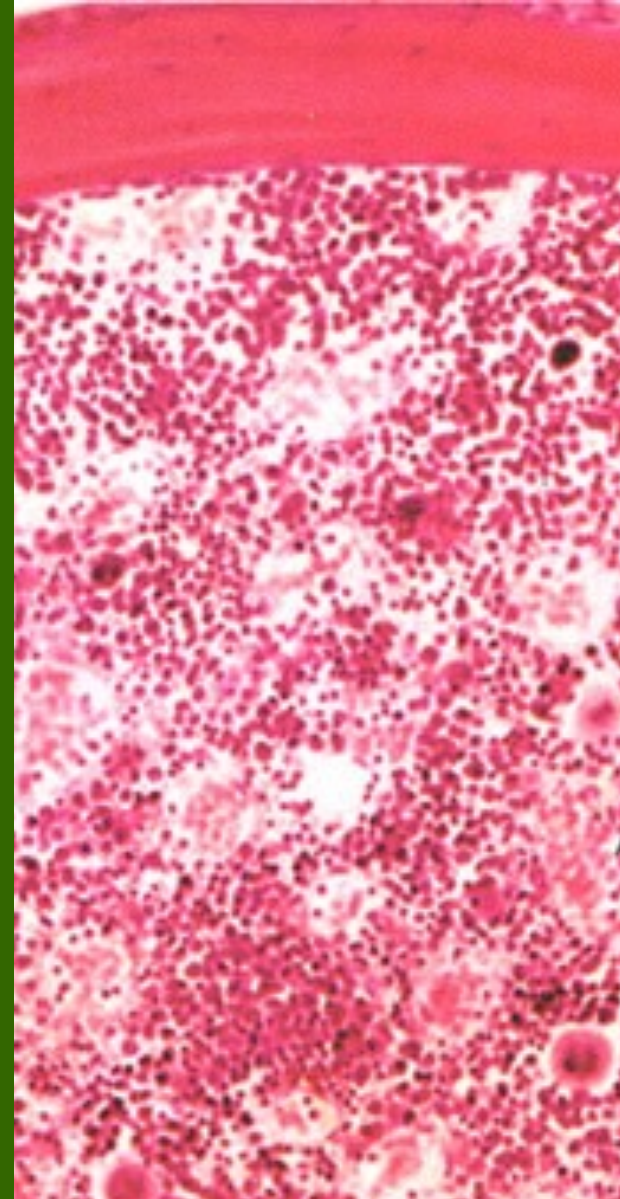
# Structure of Short, Irregular, and Flat Bones

- Thin plates of periosteum-covered compact bone on the outside and endosteum-covered spongy bone within.
- Have no diaphysis or epiphysis because they are not cylindrical.
- Contain bone marrow between the trabeculae, but no marrow cavity.
- In flat bones, the internal spongy bone layer is known as the **diploë**, and the whole arrangement resembles a stiffened sandwich.



# Bone Marrow

- **Bone marrow** is a general term for the soft tissue occupying the medullary cavity of a long bone, the spaces amid the trabeculae of spongy bone, and the larger haversian canals.
- There are 2 main types: red & yellow.
- **Red bone marrow = blood cell forming tissue = hematopoietic tissue**
  - Red bone marrow looks like blood but with a thicker consistency.
  - It consists of a delicate mesh of reticular tissue saturated with immature red blood cells and scattered adipocytes.

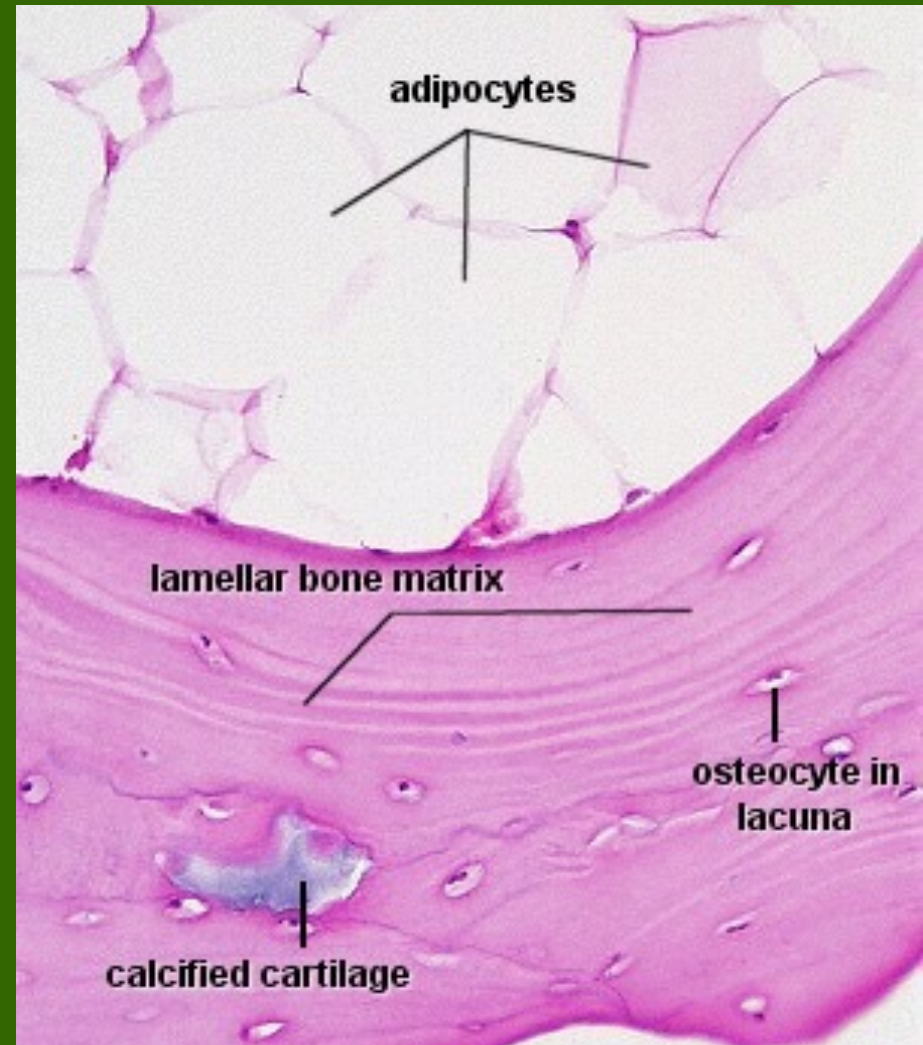


Notice the red marrow and the compact bone

# Distribution of Marrow

- In a child, the medullary cavity of nearly every bone is filled with red bone marrow.
- In young to middle-aged adults, the shafts of the long bones are filled with fatty yellow bone marrow.
  - Yellow marrow no longer produces blood, although in the event of severe or chronic anemia, it can transform back into red marrow
- In adults, red marrow is limited to the axial skeleton, pectoral girdle, pelvic girdle, and proximal heads of the humerus and the femur.

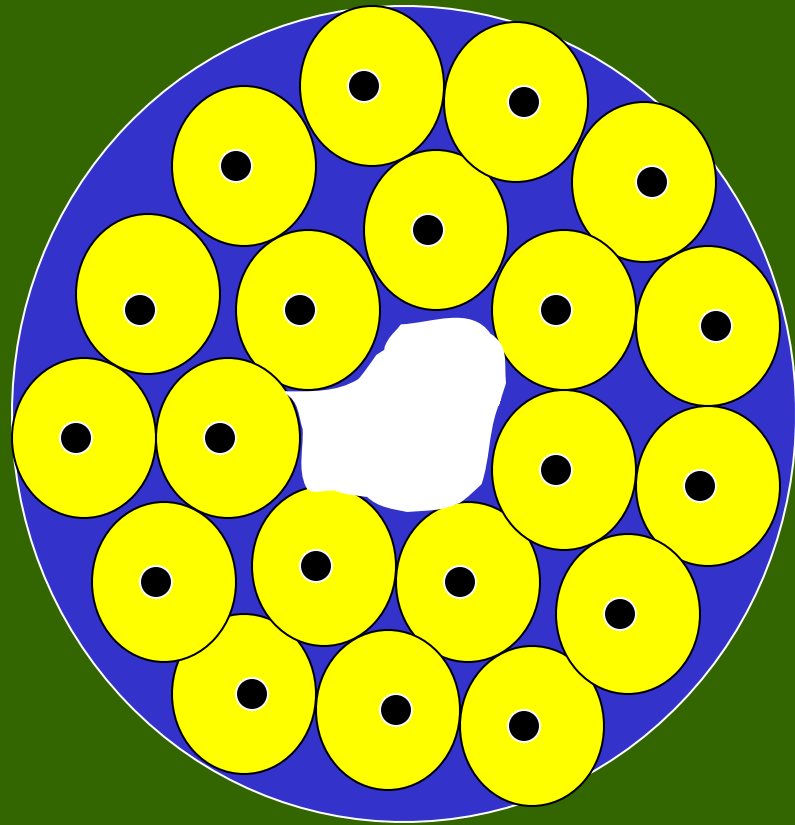
Note the compact bone on the bottom and marrow on the bottom.



# Microscopic Structure of Compact Bone

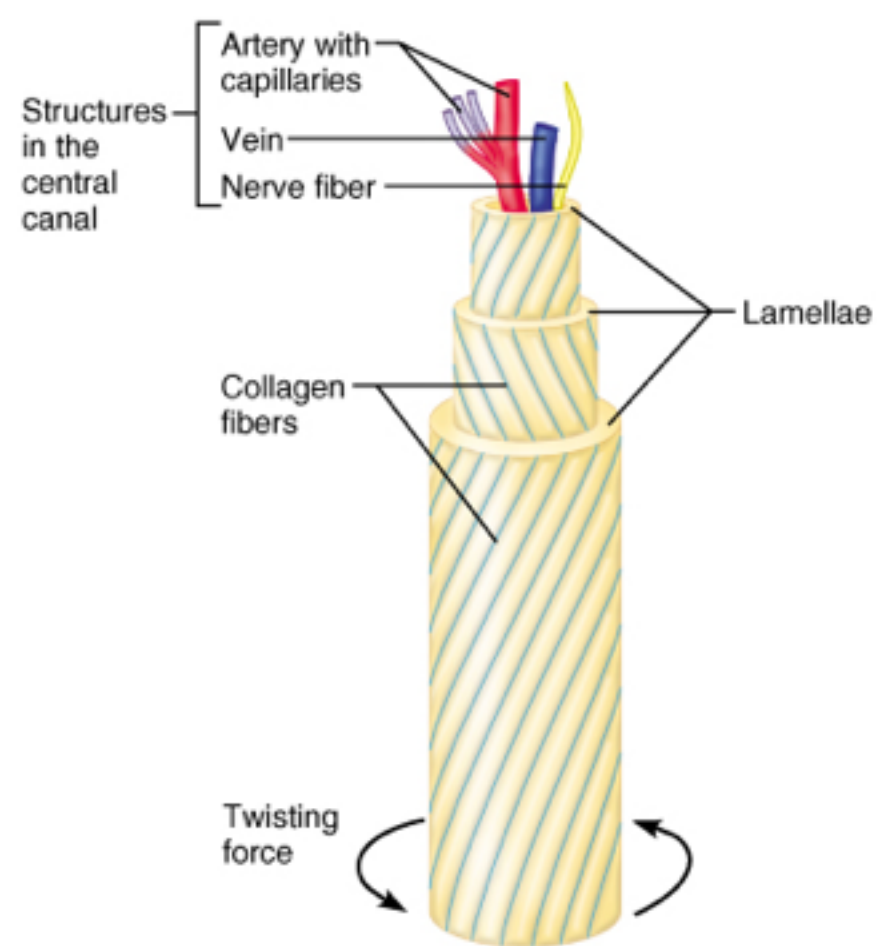
The diagram below represents a long bone shaft in cross-section. Each yellow circle represents an osteon. The blue represents additional matrix filling in the space btwn osteons. The white in the middle is the marrow cavity.

- Consists of multiple cylindrical structural units known as osteons or haversian systems.
- Imagine these osteons as weight-bearing pillars that are arranged parallel to one another along the long axis of a compact bone.



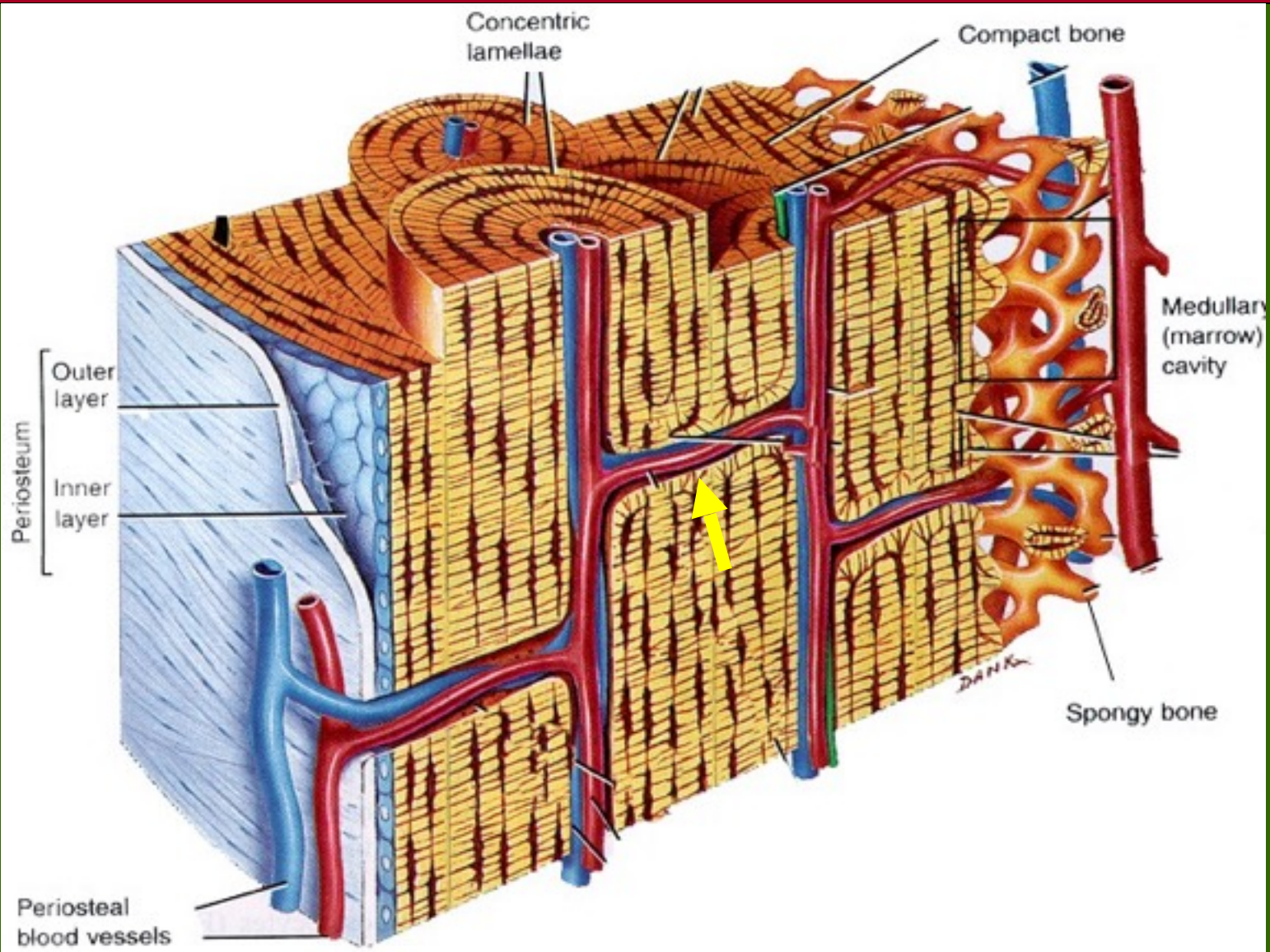
# Osteons

- Each osteon consists of a single central canal, known as a haversian canal, surrounded by concentric layers of calcified bone matrix.
  - Haversian canals allow the passage of blood vessels, lymphatic vessels, and nerve fibers.
  - Each of the concentric matrix “tubes” that surrounds a haversian canal is known as a lamella.
  - All the collagen fibers in a particular lamella run in a single direction, while collagen fibers in adjacent lamellae will run in the opposite direction. This allows bone to better withstand twisting forces.



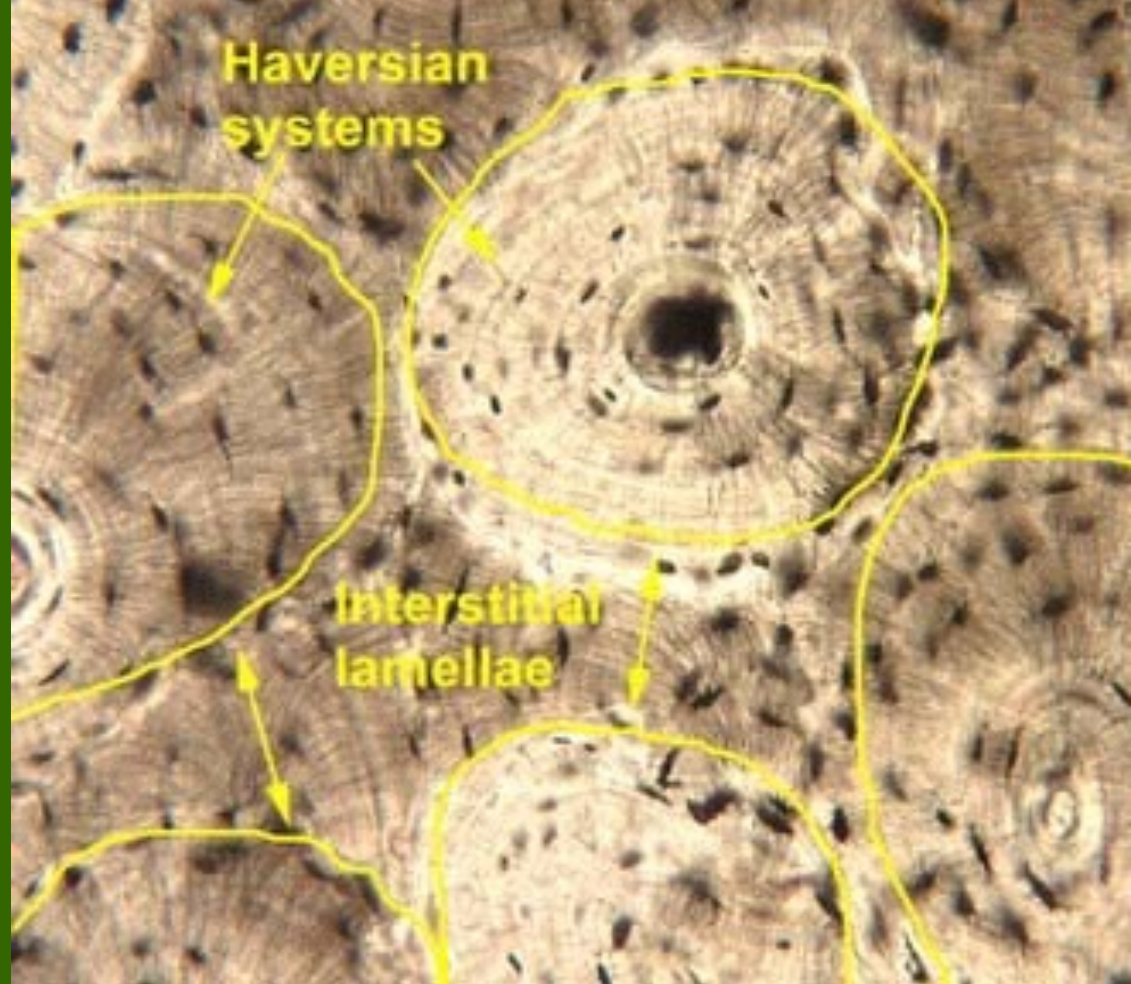


Running perpendicular to the haversian canals are Volkmann's canals. They connect the blood and nerve supply in the periosteum to those in the haversian canals and the medullary cavity.



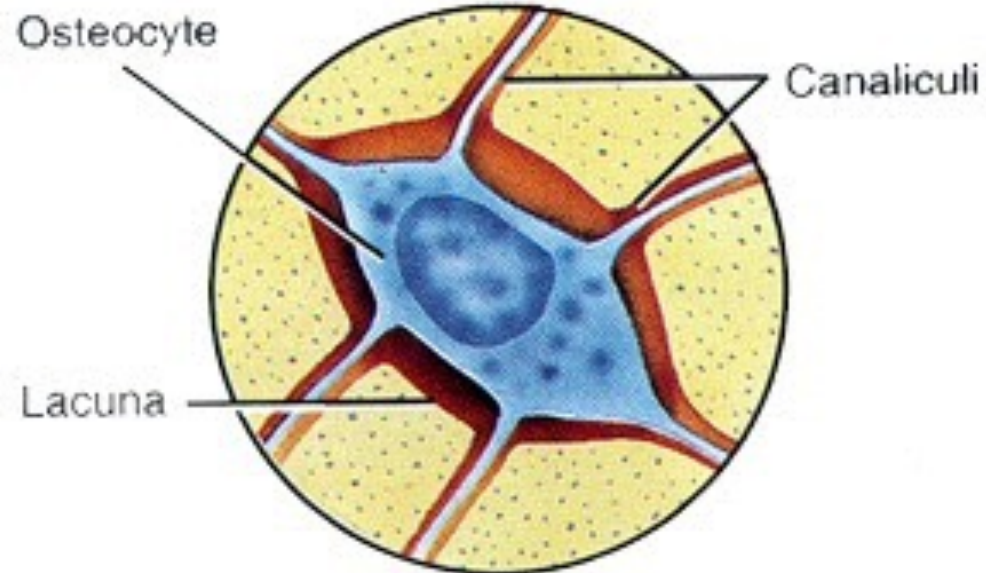
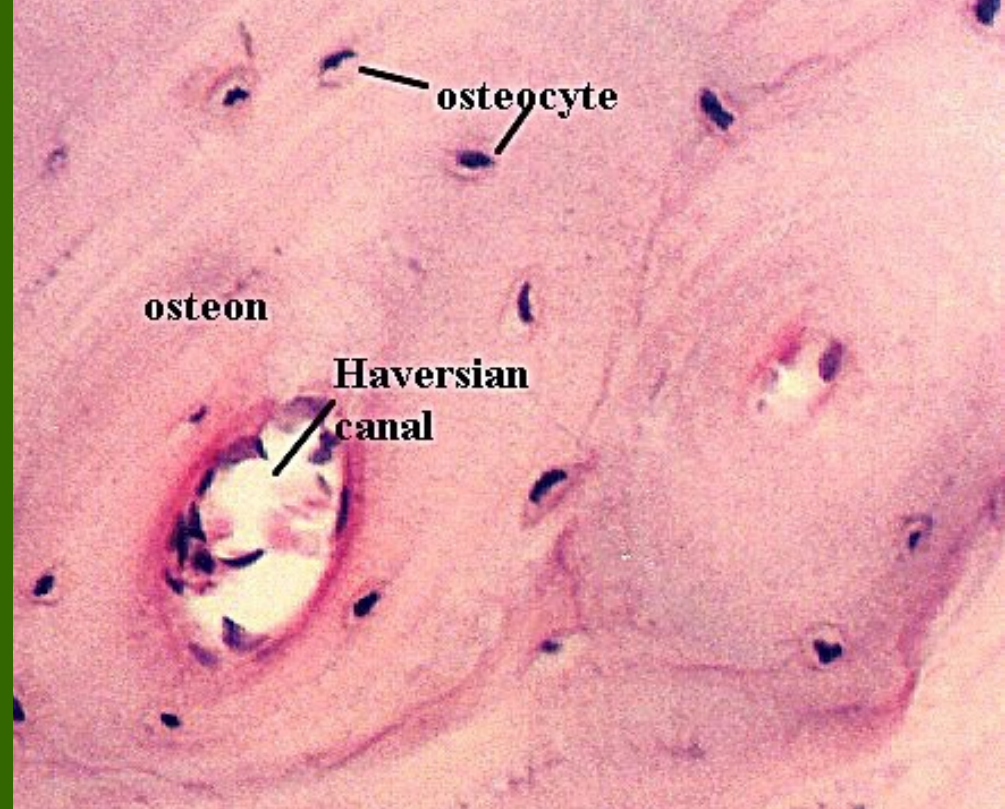
# Osteons

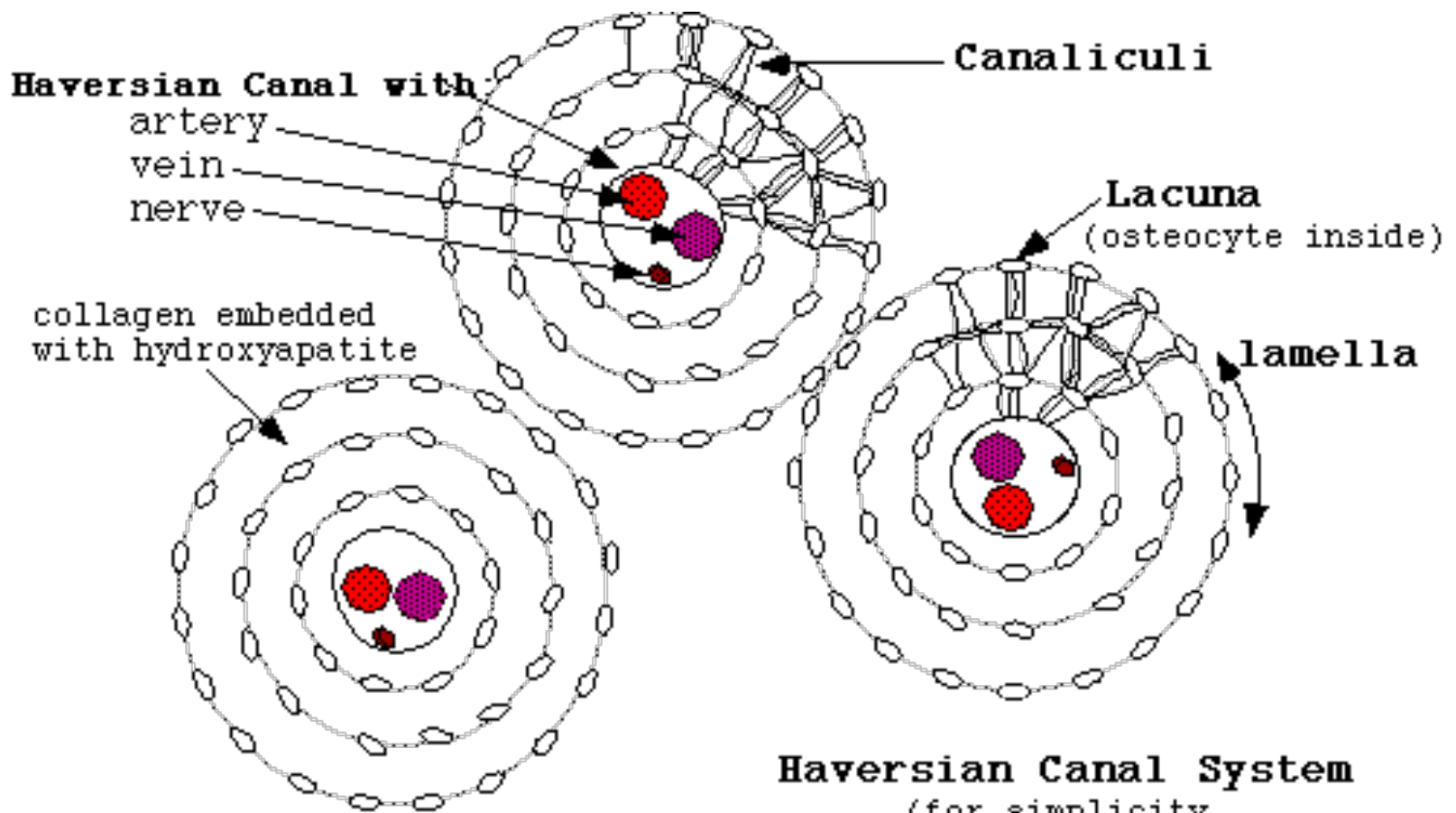
- Lying in between intact osteons are incomplete lamellae called **interstitial lamellae**. These fill the gaps between osteons or are remnants of bone remodeling.



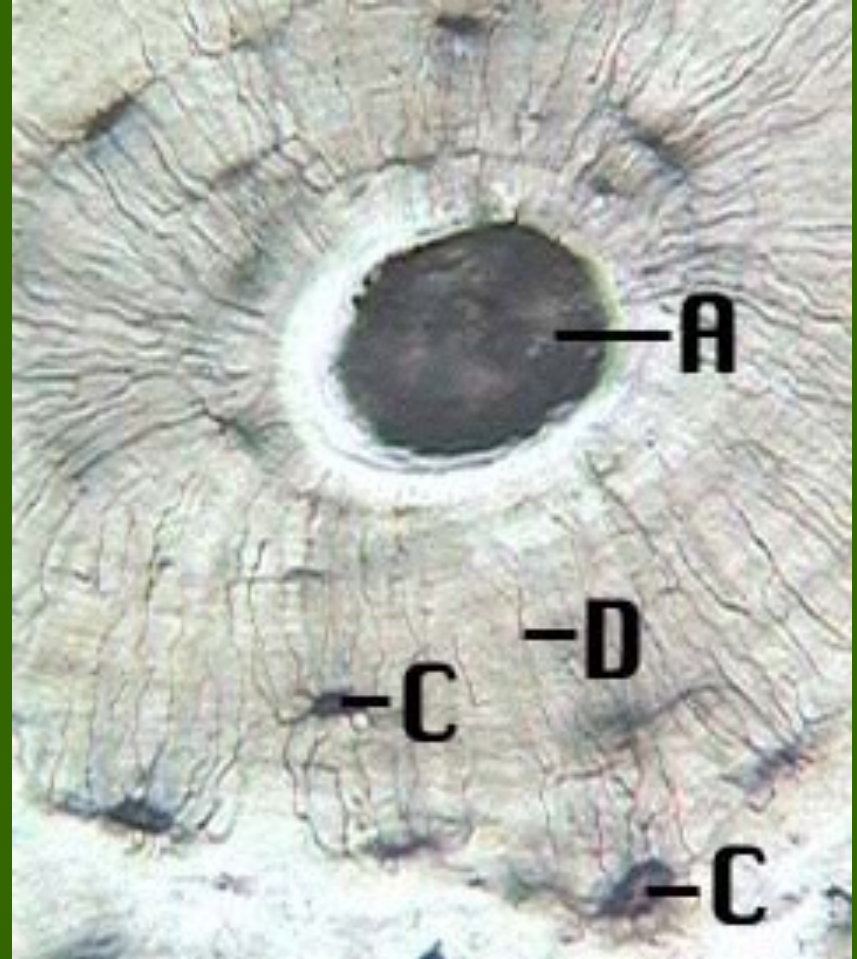
- There are also **circumferential lamellae** that extend around the circumference of the shaft. There are inner circumferential lamellae surrounding the endosteum and outer circumferential lamellae just inside the periosteum.

- Spider-shaped osteocytes occupy small cavities known as **lacunae** at the junctions of the lamellae. Hairlike canals called **canaliculi** connect the lacunae to each other and to the central canal.
- Canaliculi allow the osteocytes to exchange nutrients, wastes, and chemical signals to each other via intercellular connections known as gap junctions.





**Haversian Canal System**  
 (for simplicity,  
 only a few canaliculi are shown)

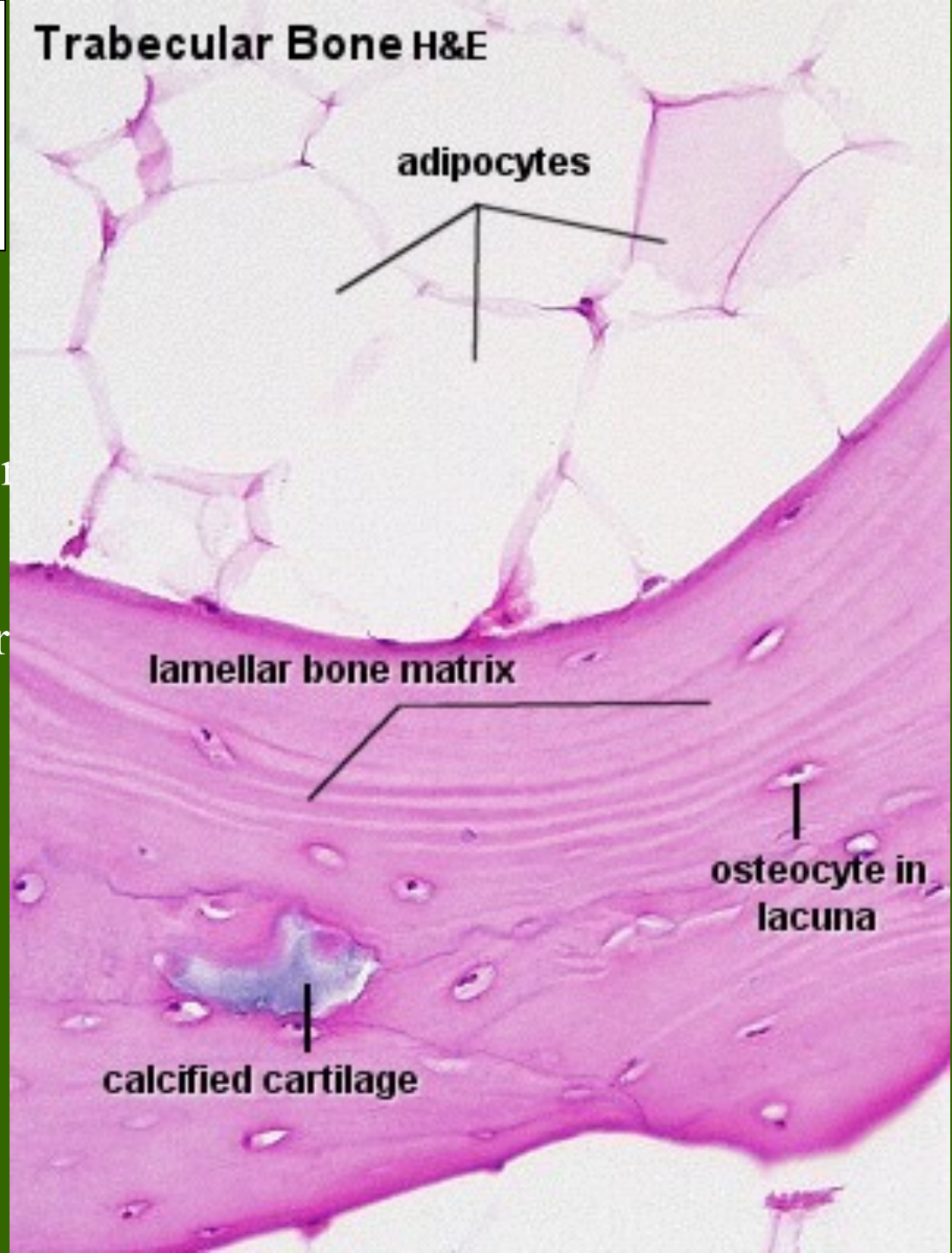


Here, we have a close up and a far away view of compact bone. You should be able to identify haversian canals, concentric lamellae, interstitial lamellae, lacunae, and canaliculi.

# Microscopic Structure of Spongy Bone

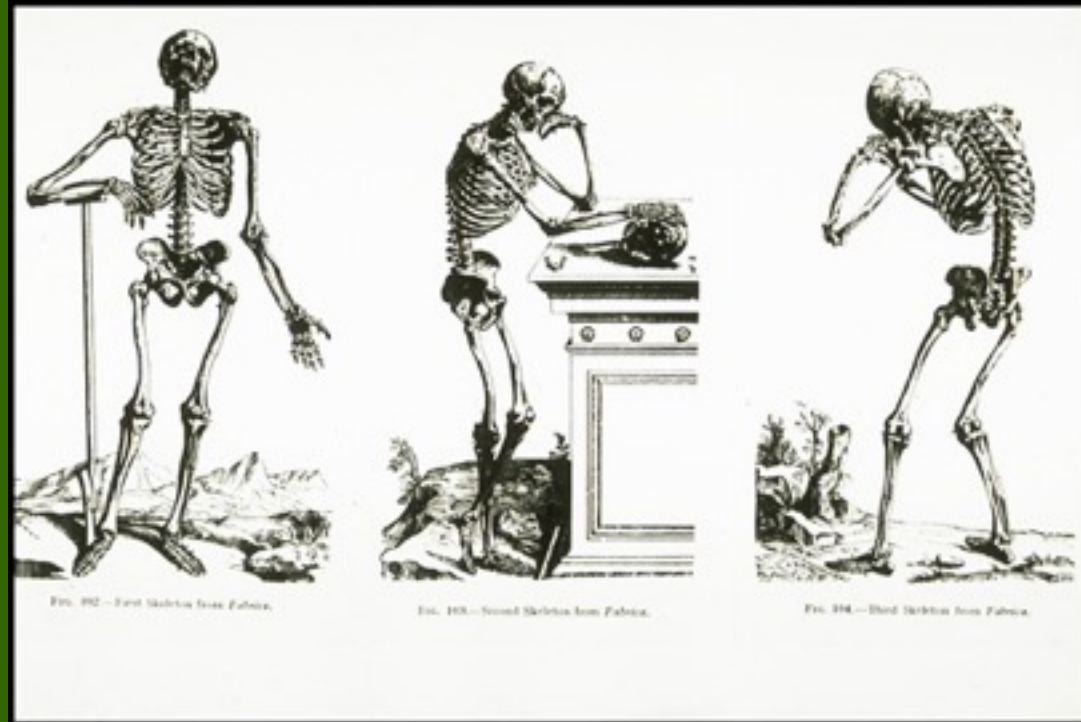
- Appears poorly organized compared to compact bone.
- **Lacks osteons.**
- Trabeculae align along position of stress and exhibit extensive cross-bracing.
- Trabeculae are a few cell layers thick and contain irregularly arranged lamellae and osteocytes interconnected by canaliculi.
- *No haversian or Volkmann's canals are necessary. Why?*

Trabecular Bone H&E



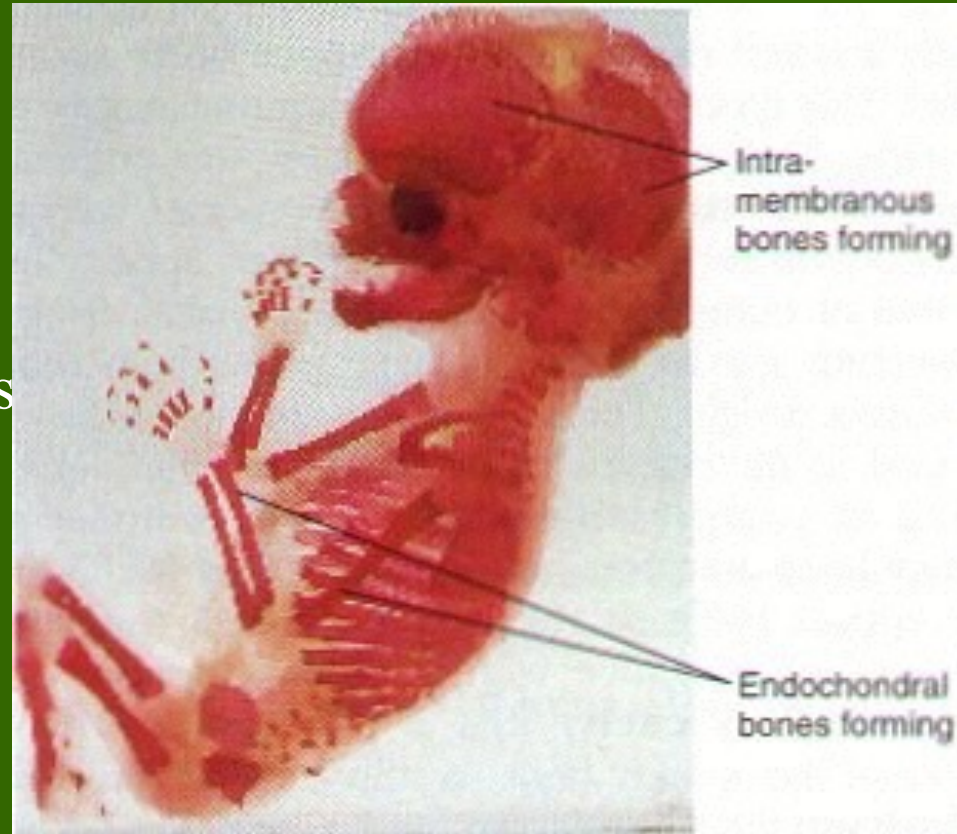
# Bone Development

- Osteogenesis (a.k.a. ossification) is the process of bone tissue formation.
- In embryos this leads to the formation of the bony skeleton.
- In children and young adults, ossification occurs as part of bone growth.
- In adults, it occurs as part of bone remodeling and bone repair.



# Formation of the Bony Skeleton

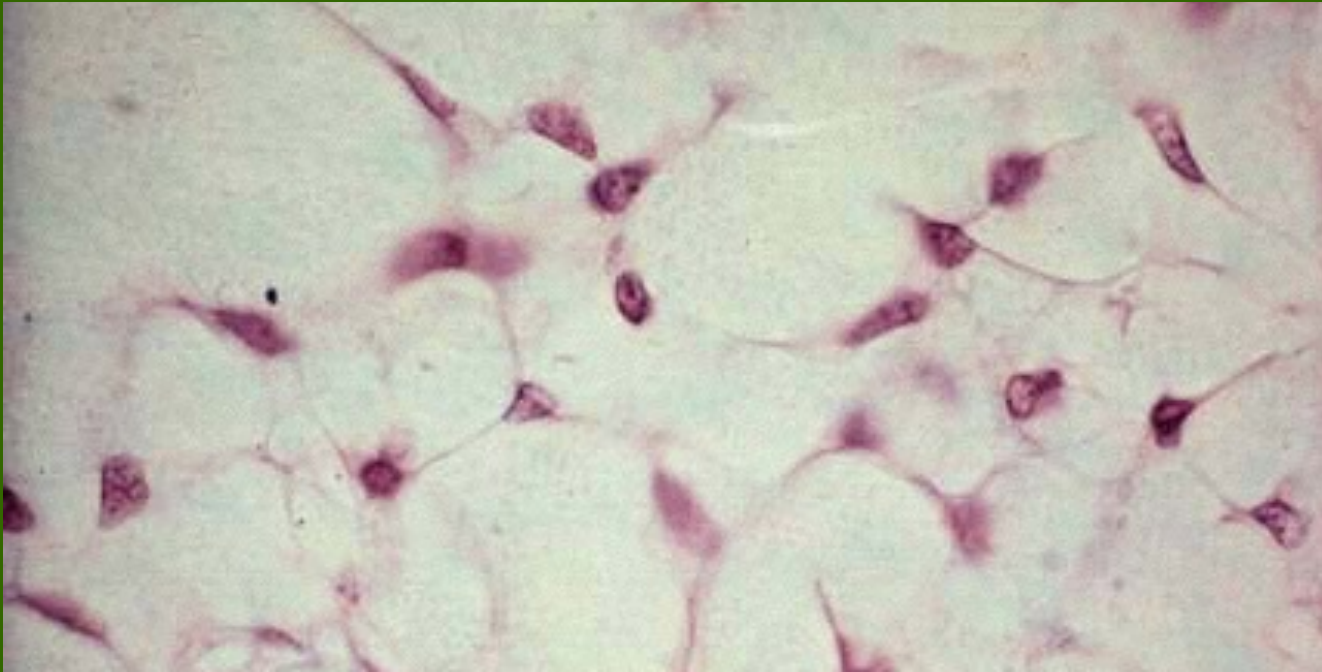
- Before week 8, the human embryonic skeleton is made of fibrous membranes and hyaline cartilage.
- After week 8, bone tissue begins to replace the fibrous membranes and hyaline cartilage.
  - The development of bone from a fibrous membrane is called intramembranous ossification. Why?
  - The replacement of hyaline cartilage with bone is known as endochondral ossification. Why?



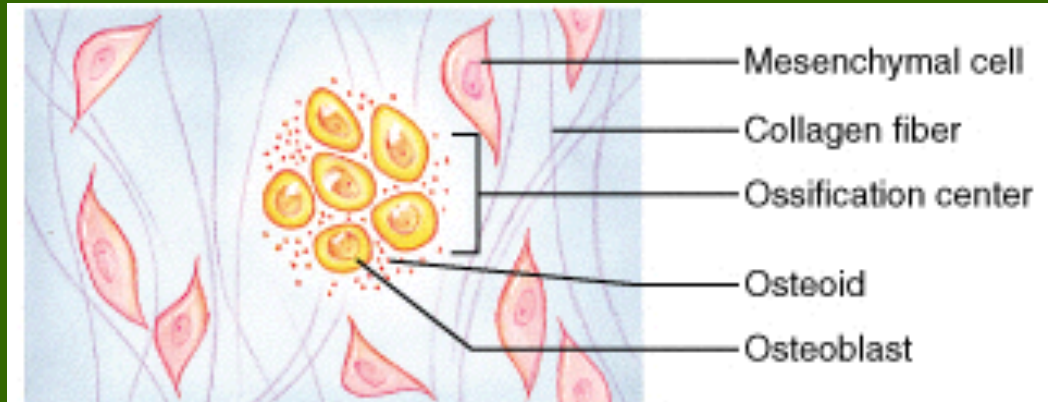


# Intramembranous Ossification

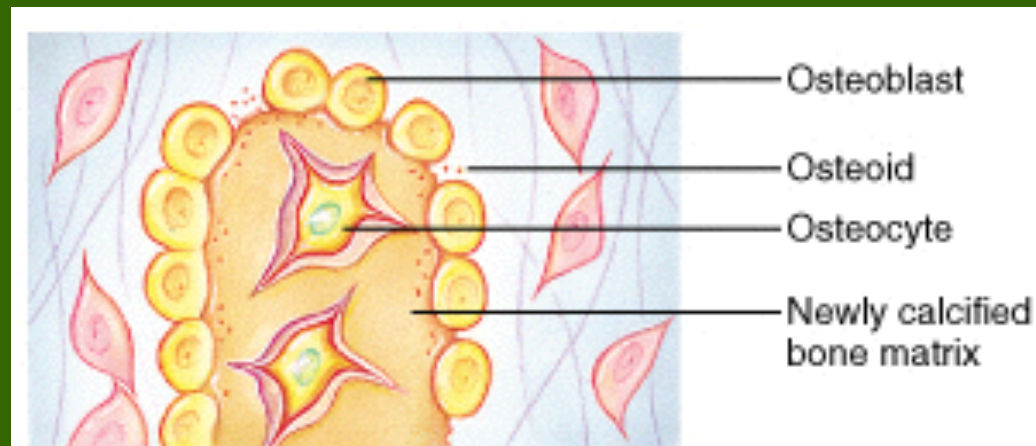
- Some bones of the skull (frontal, parietal, temporal, and occipital bones), the facial bones, the clavicles, the pelvis, the scapulae, and part of the mandible are formed by intramembranous ossification
- Prior to ossification, these structures exist as fibrous membranes made of embryonic connective tissue known as **mesenchyme**.



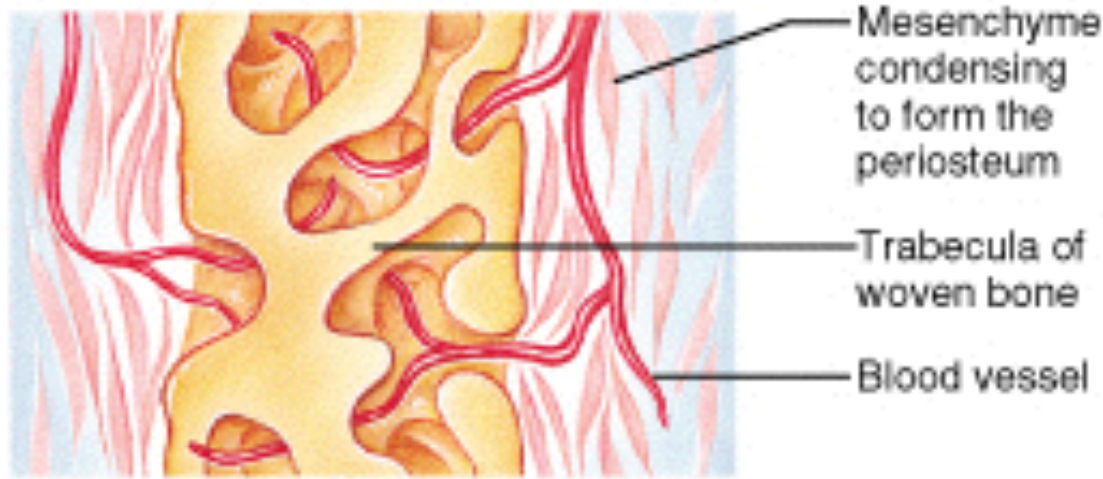
- Mesenchymal cells first cluster together and start to secrete the organic components of bone matrix which then becomes mineralized through the crystallization of calcium salts. As calcification occurs, the mesenchymal cells differentiate into osteoblasts.
- The location in the tissue where ossification begins is known as an **ossification center**.
- Some osteoblasts are trapped w/i bony pockets. These cells differentiate into osteocytes.



① An ossification center appears in the fibrous connective tissue membrane.

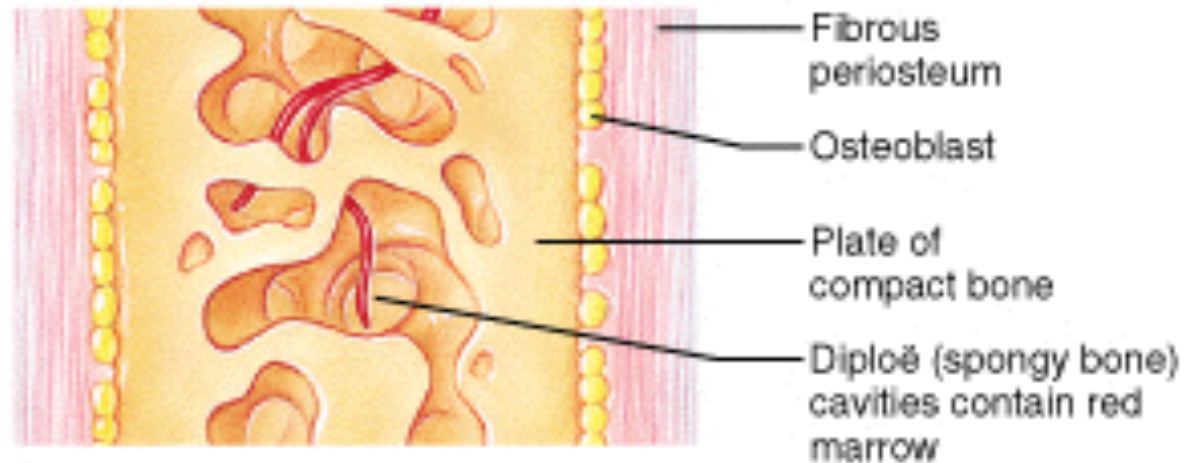


② Bone matrix (osteoid) is secreted within the fibrous membrane.



③ Woven bone and periosteum form.

- The developing bone grows outward from the ossification center in small struts called spicules.
- Mesenchymal cell divisions provide additional osteoblasts.
- The osteoblasts require a reliable source of oxygen and nutrients. Blood vessels trapped among the spicules meet these demands and additional vessels branch into the area. These vessels will eventually become entrapped within the growing bone.

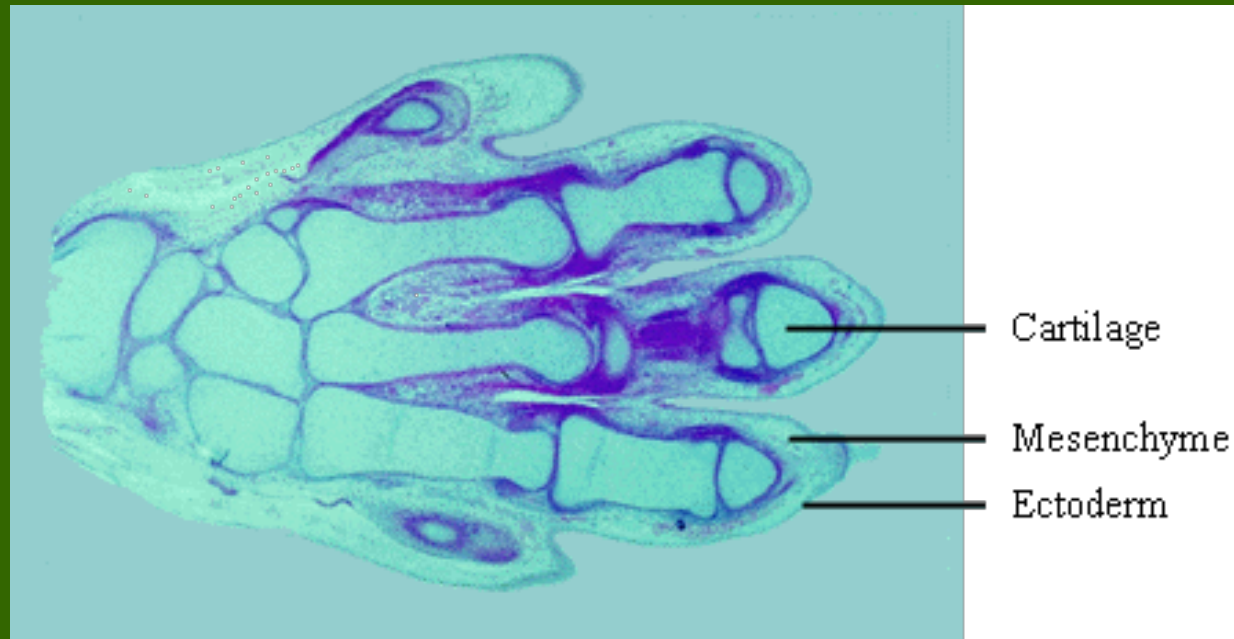


④ Bone collar of compact bone forms and red marrow appears.

- Initially, the intramembranous bone consists only of spongy bone. Subsequent remodeling around trapped blood vessels can produce osteons typical of compact bone.
- As the rate of growth slows, the connective tissue around the bone becomes organized into the fibrous layer of the periosteum. Osteoblasts close to the bone surface become the inner cellular layer of the periosteum.

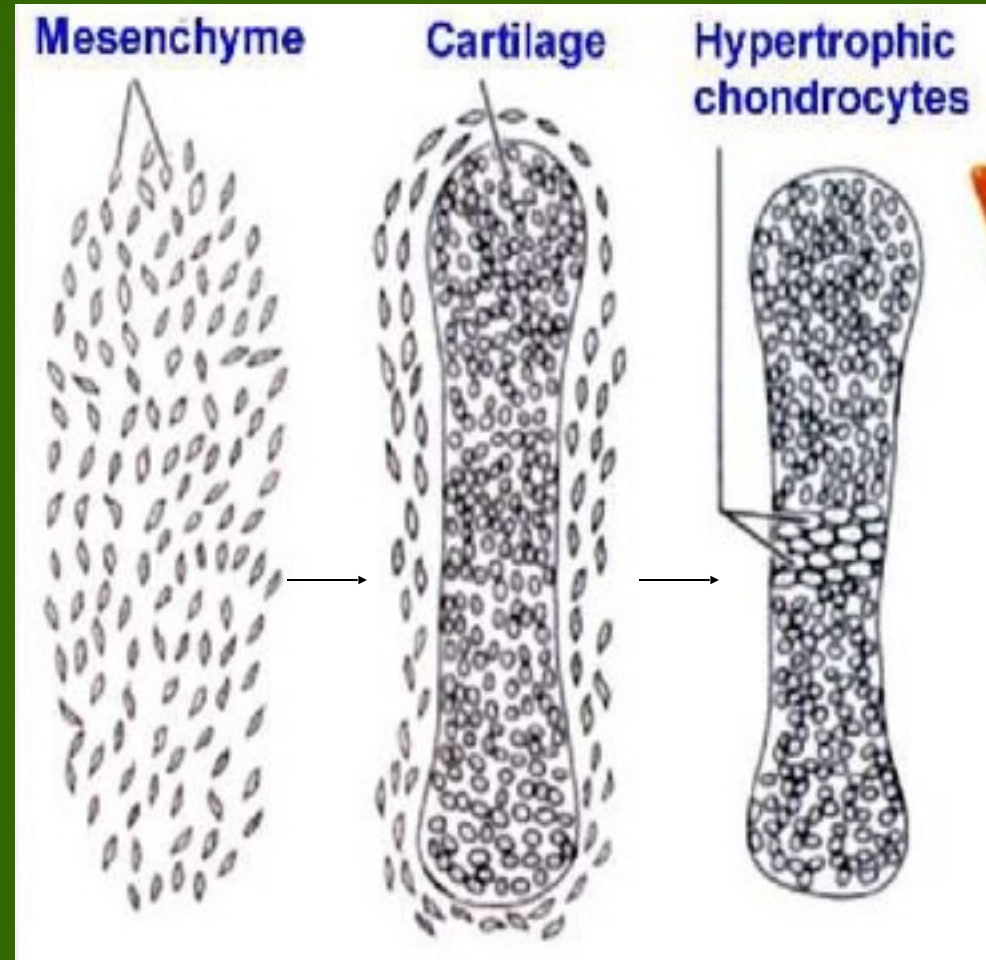
# Endochondral Ossification

- Begins with the formation of a hyaline cartilage model which will later be replaced by bone.
- Most bones in the body develop via this model.
- More complicated than intramembranous because the hyaline cartilage must be broken down as ossification proceeds.
- We'll follow limb bone development as an example.



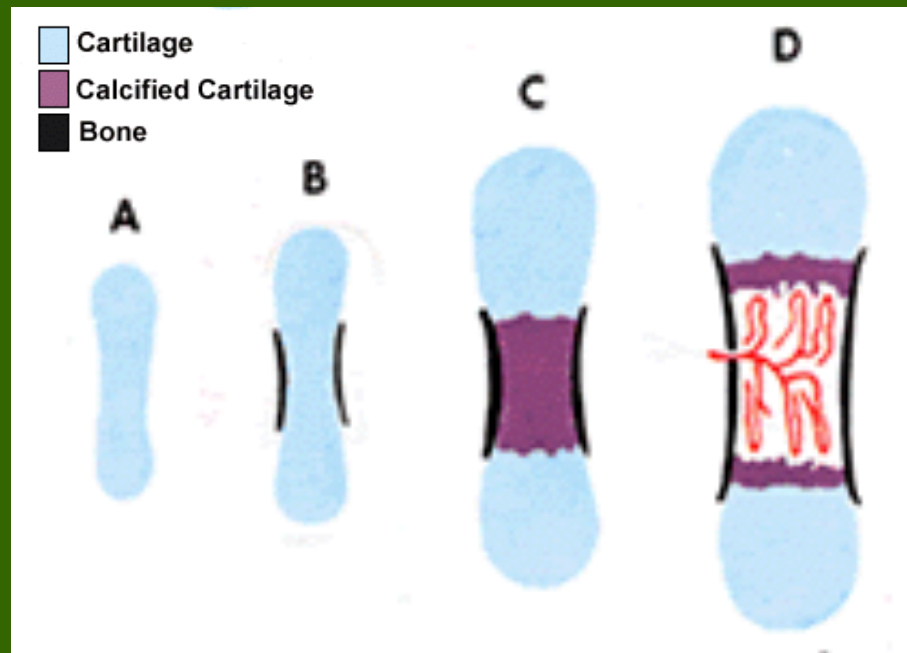
# Endochondral Ossification – Step 1

- Chondrocytes near the center of the shaft of the hyaline cartilage model increase greatly in size. As these cells enlarge, their lacunae expand, and the matrix is reduced to a series of thin struts. These struts soon begin to calcify.
- The enlarged chondrocytes are now deprived of nutrients (diffusion cannot occur through calcified cartilage) and they soon die and disintegrate.



# Endochondral Ossification – Step 2

- Blood vessels grow into the perichondrium surrounding the shaft of the cartilage. The cells of the inner layer of the perichondrium in this region then differentiate into osteoblasts.
- The perichondrium is now a periosteum and the inner osteogenic layer soon produces a thin layer of bone around the shaft of the cartilage. This bony collar provides support.



# Endochondral Ossification – Step 3

- Blood supply to the periosteum, and capillaries and fibroblasts migrate into the heart of the cartilage, invading the spaces left by the disintegrating chondrocytes.
- The calcified cartilaginous matrix breaks down; the fibroblasts differentiate into osteoblasts that replace it with spongy bone.
- Bone development begins at this **primary center of ossification** and spreads toward both ends of the cartilaginous model.
- While the diameter is small, the entire diaphysis is filled with spongy bone.



Notice the primary ossification centers in the thigh and forearm bones of the above fetus.

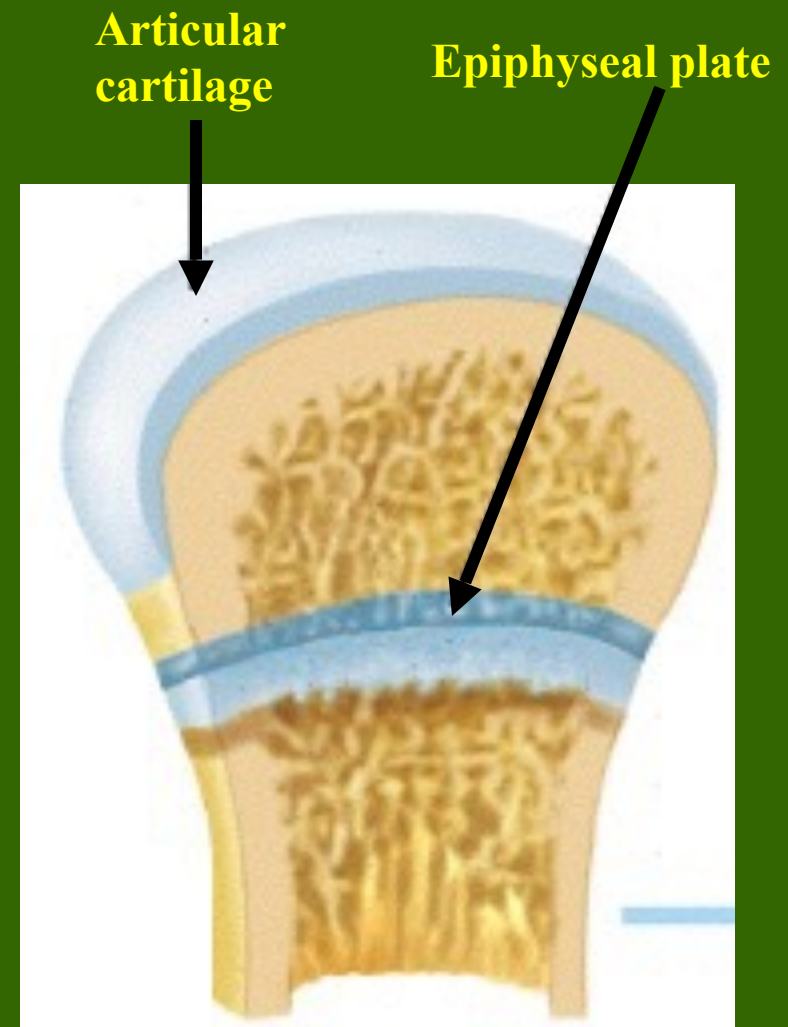


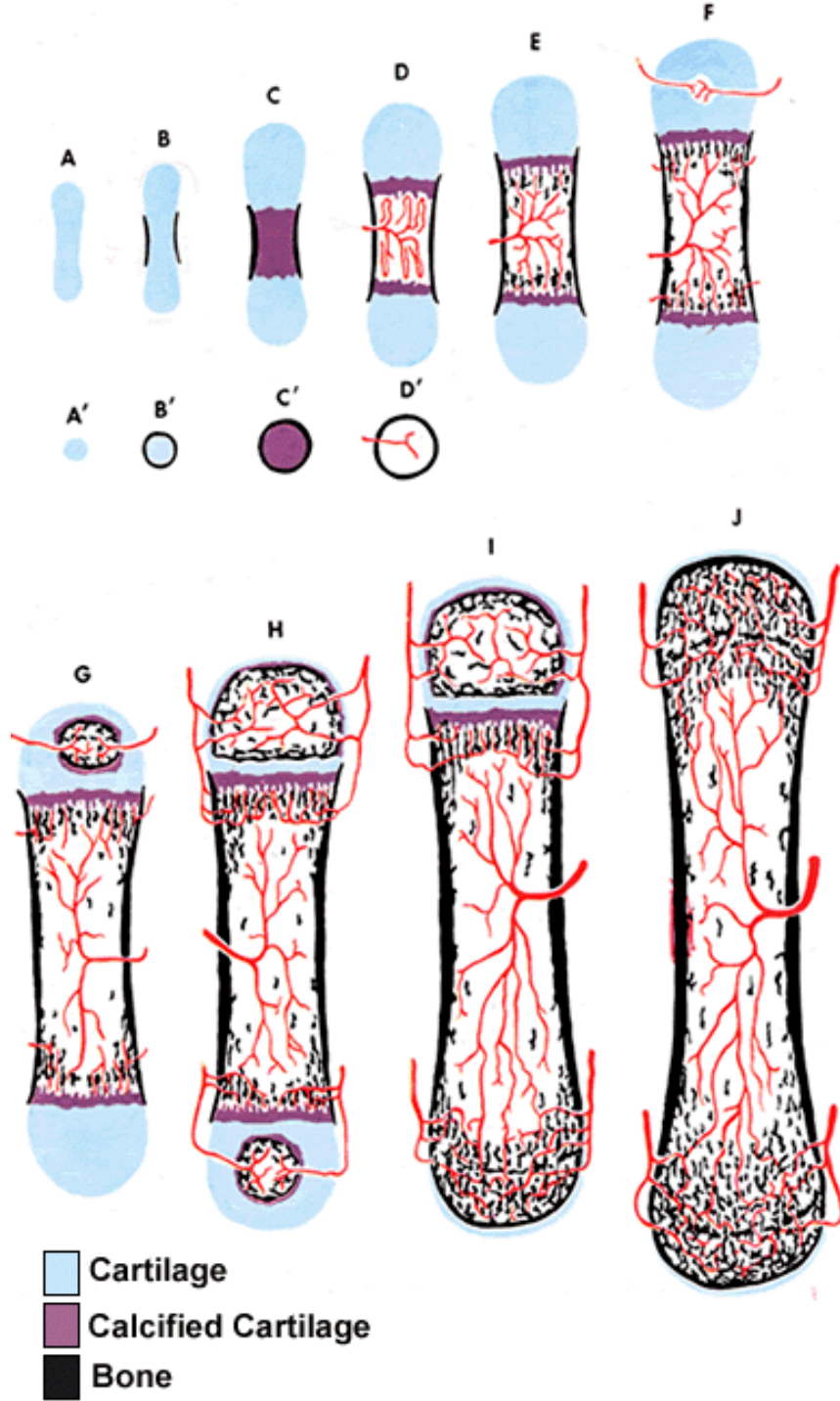
# Endochondral Ossification – Step 4

- The primary ossification center enlarges proximally and distally, while osteoclasts break down the newly formed spongy bone and open up a medullary cavity in the center of the shaft.
- As the osteoblasts move towards the epiphyses, the epiphyseal cartilage is growing as well. *Thus, even though the shaft is getting longer, the epiphyses have yet to be transformed into bone.*

# Endochondral Ossification – Step 5

- Around birth, most long bones have a bony diaphysis surrounding remnants of spongy bone, a widening medullary cavity, and 2 cartilaginous epiphyses.
- At this time, capillaries and osteoblasts will migrate into the epiphyses and create **secondary ossification centers**. The epiphysis will be transformed into spongy bone. However, a small cartilaginous plate, known as the **epiphyseal plate**, will remain at the juncture between the epiphysis and the diaphysis.



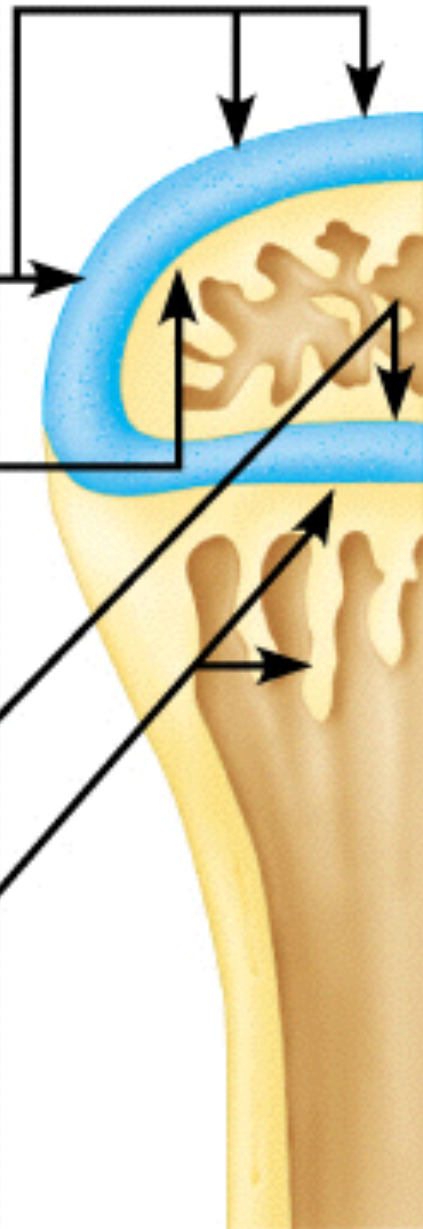


# Growth in Bone Length

## Growth

Bone grows in length because:

- ① Cartilage grows here
- ② Cartilage replaced by bone here
- ③ Cartilage grows here
- ④ Cartilage replaced by bone here



- Epiphyseal cartilage (close to the epiphysis) of the epiphyseal plate divides to create more cartilage, while the diaphyseal cartilage (close to the diaphysis) of the epiphyseal plate is transformed into bone. This increases the length of the shaft.

At puberty, growth in bone length is increased dramatically by the combined activities of growth hormone, thyroid hormone, and the sex hormones.

- As a result osteoblasts begin producing bone faster than the rate of epiphyseal cartilage expansion. Thus the bone grows while the epiphyseal plate gets narrower and narrower and ultimately disappears. A remnant (**epiphyseal line**) is visible on X-rays (*do you see them in the adjacent femur, tibia, and fibula?*)



# Growth in Bone Thickness

- Osteoblasts beneath the periosteum secrete bone matrix on the external surface of the bone. This obviously makes the bone thicker.
- At the same time, osteoclasts on the endosteum break down bone and thus widen the medullary cavity.
- This results in an increase in shaft diameter even though the actual amount of bone in the shaft is relatively unchanged.

# Fractures

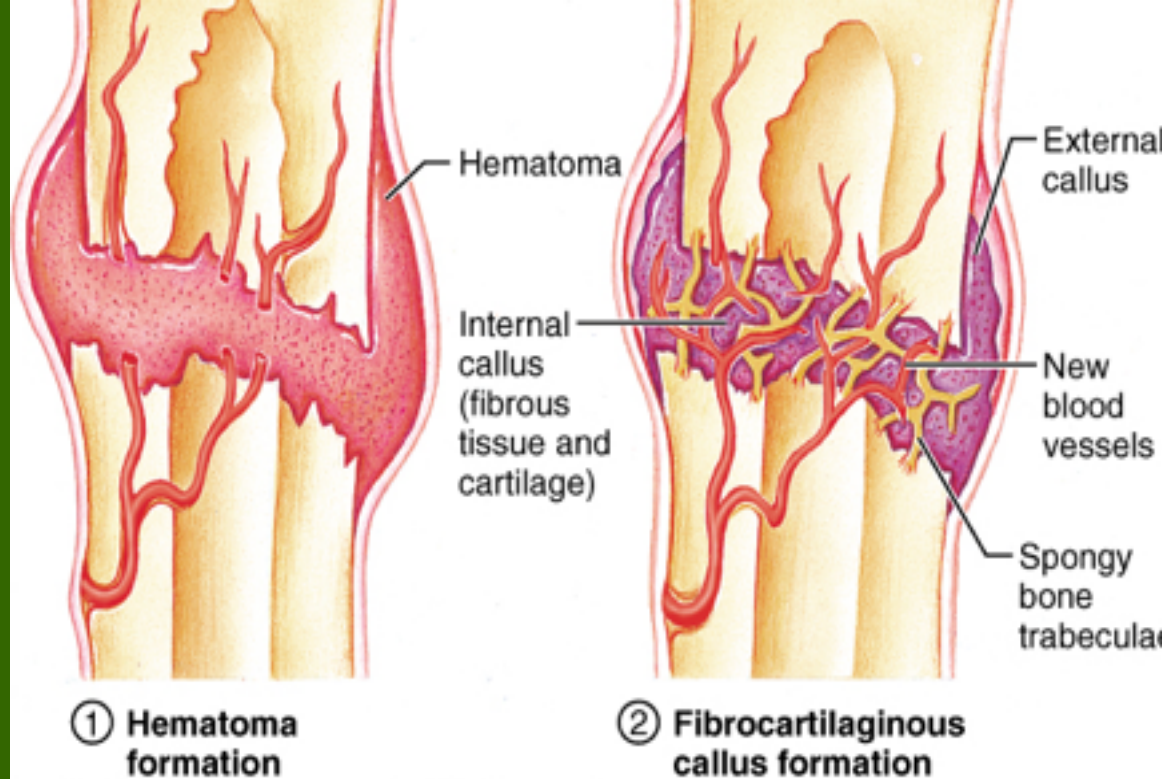
- Despite its mineral strength, bone may crack or even break if subjected to extreme loads, sudden impacts, or stresses from unusual directions.
  - The damage produced constitutes a **fracture**.
- The proper healing of a fracture depends on whether or not, the blood supply and cellular components of the periosteum and endosteum survive.



# Fracture Repair

## Step 1:

- A. Immediately after the fracture, extensive bleeding occurs. Over a period of several hours, a large blood clot, or **fracture hematoma**, develops.
- B. Bone cells at the site become deprived of nutrients and die. The site becomes swollen, painful, and inflamed.



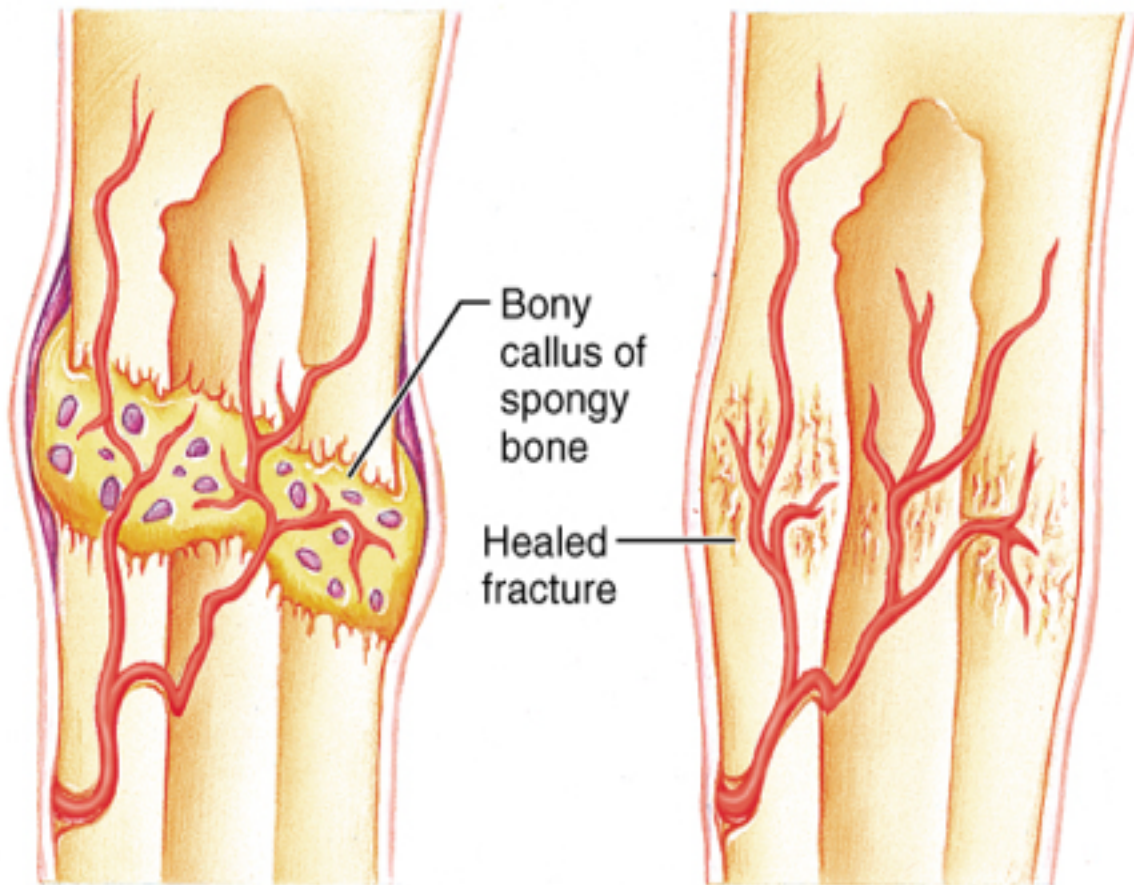
## Step 2:

- A. Granulation tissue is formed as the hematoma is infiltrated by capillaries and macrophages, which begin to clean up the debris.
- B. Some fibroblasts produce collagen fibers that span the break, while others differentiate into chondroblasts and begin secreting cartilage matrix.
- C. Osteoblasts begin forming spongy bone.
- D. This entire structure is known as a **fibrocartilaginous callus** and it splints the broken bone.



# Fracture Repair

- Step 3:
  - A. Bone trabeculae increase in number and convert the fibrocartilaginous callus into a **bony callus** of spongy bone. Typically takes about 6-8 weeks for this to occur.



③ Bony callus formation

④ Bone remodeling

- Step 4:
  - A. During the next several months, the bony callus is continually remodeled.
  - B. Osteoclasts work to remove the temporary supportive structures while osteoblasts rebuild the compact bone and reconstruct the bone so it returns to its original shape/structure.

# Fracture Types

- Fractures are often classified according to the position of the bone ends after the break:

**Open (compound)** → bone ends penetrate the skin.

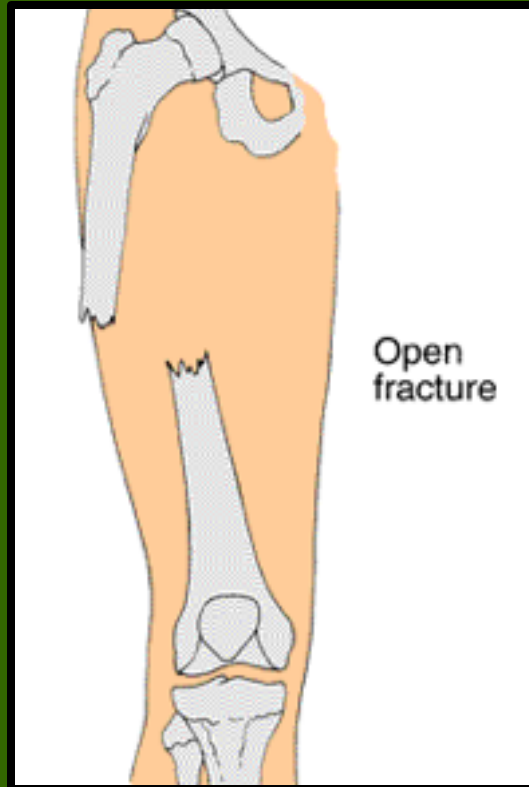
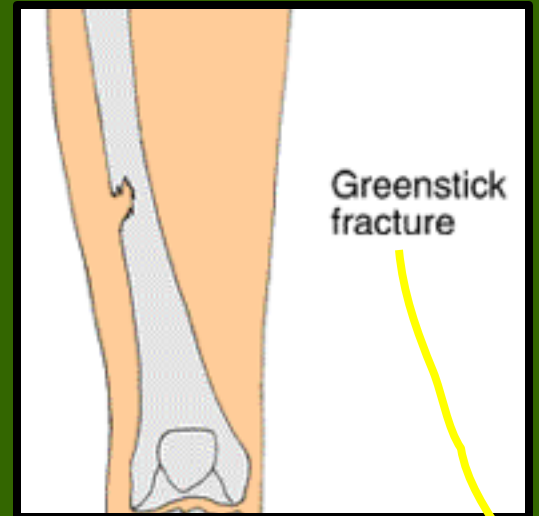
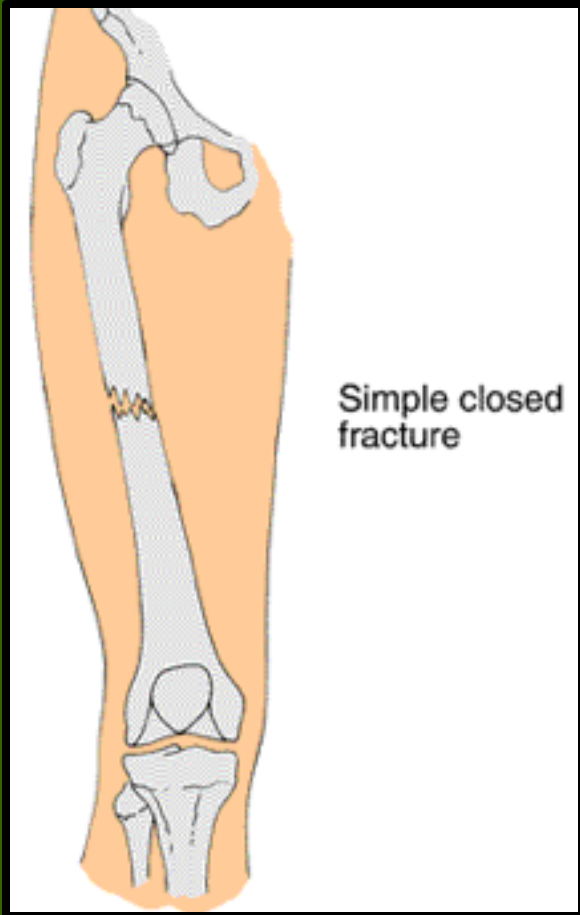
**Closed (simple)** → bone ends don't penetrate the skin.

**Comminuted** → bone fragments into 3 or more pieces.  
Common in the elderly (brittle bones).

**Greenstick** → bone breaks incompletely. One side bent, one side broken. Common in children whose bone contains more collagen and are less mineralized.

**Spiral** → ragged break caused by excessive twisting forces. Sports injury/Injury of abuse.

**Impacted** → one bone fragment is driven into the medullary space or spongy bone of another.



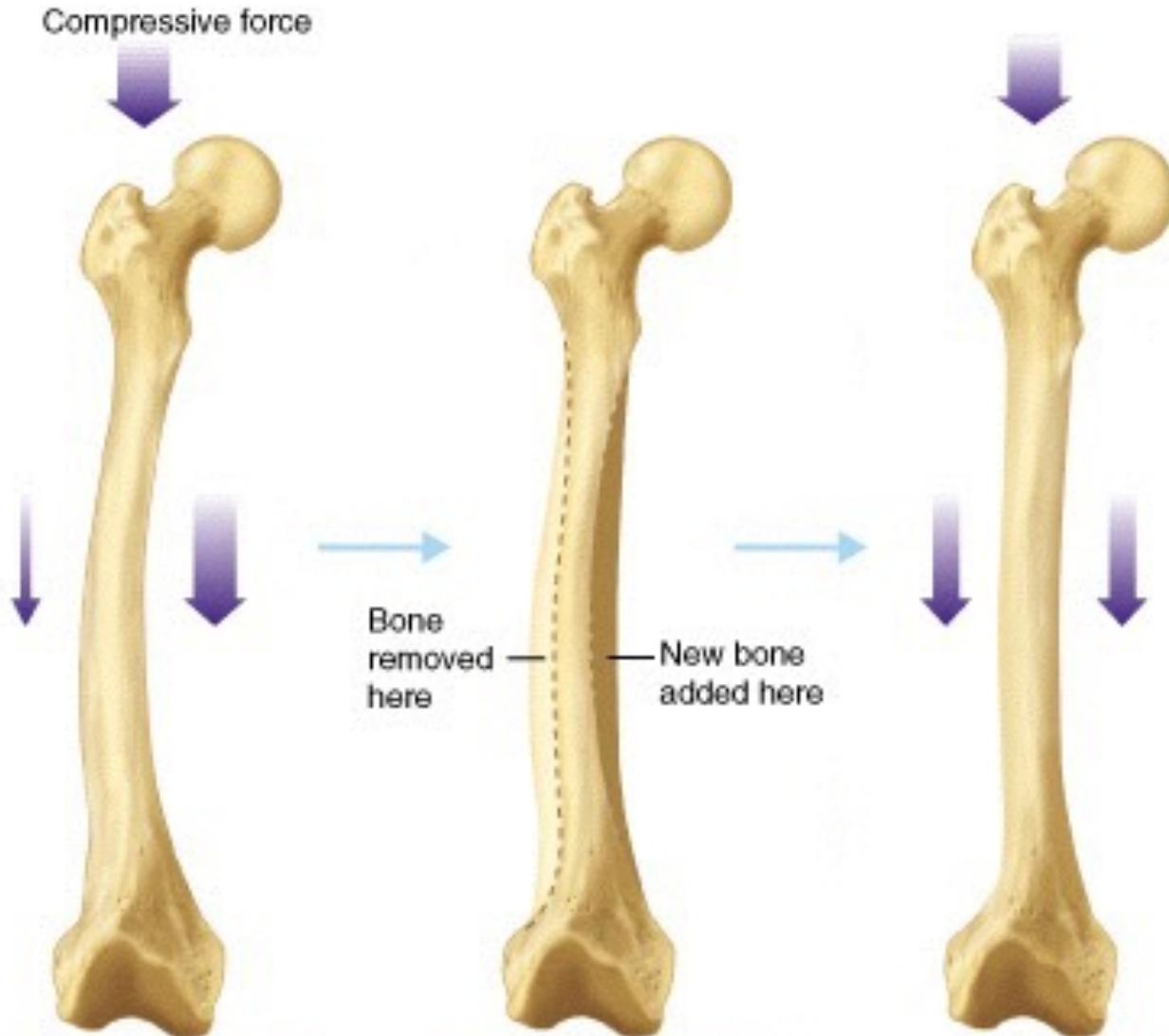
*What kind of fracture is this?*



*It's kind of tough to tell, but this is a \_\_\_\_\_ fracture.*



# Bone Remodeling

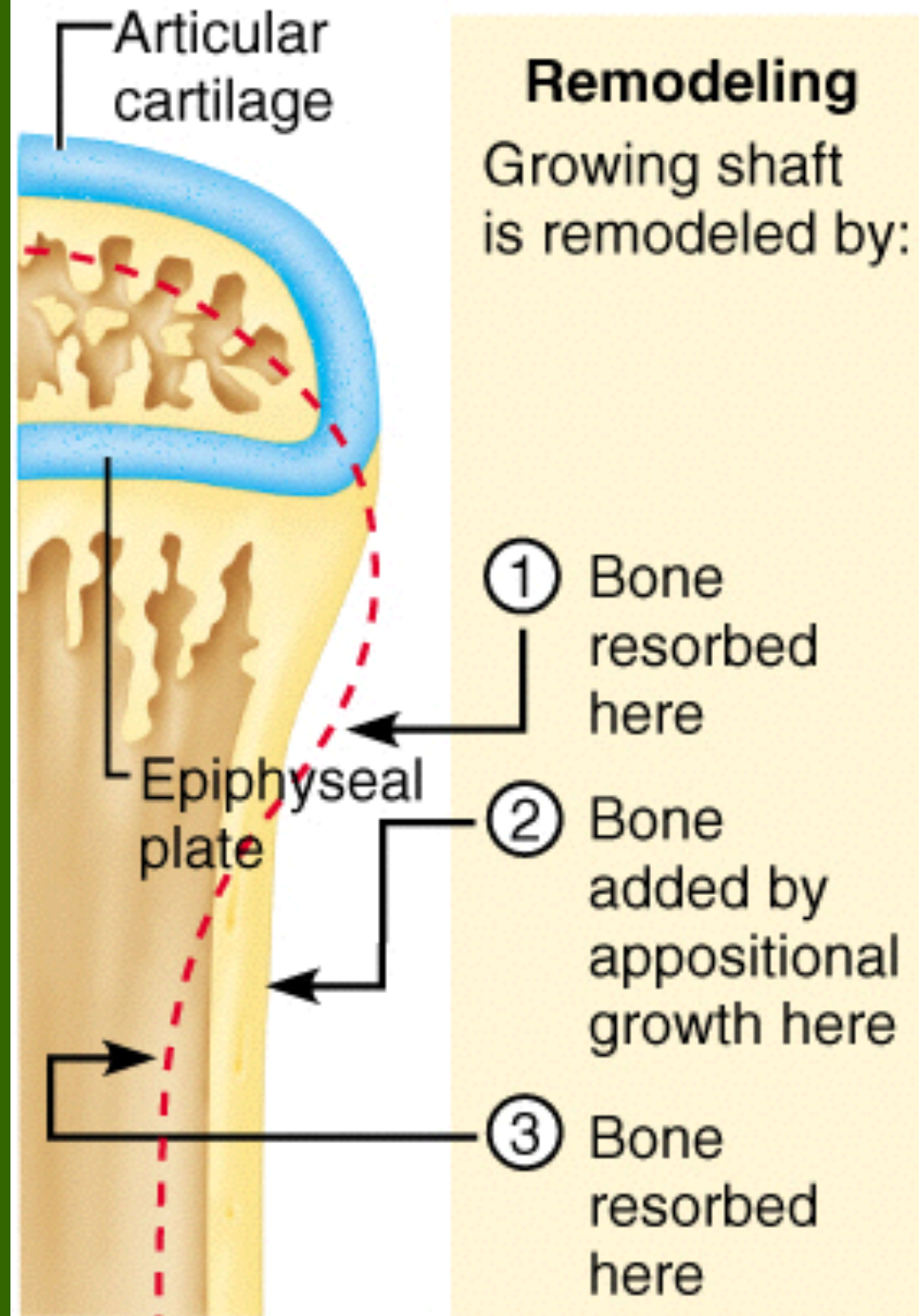


- Bone is a dynamic tissue.
  - *What does that mean?*
- **Wolff's law** holds that bone will grow or remodel in response to the forces or demands placed on it. *Examine this with the bone on the left.*

Check out the mechanism of remodeling on the right!

Why might you suspect someone whose been a powerlifter for 15 years to have heavy, massive bones, especially at the point of muscle insertion?

Astronauts tend to experience bone atrophy after they're in space for an extended period of time. Why?



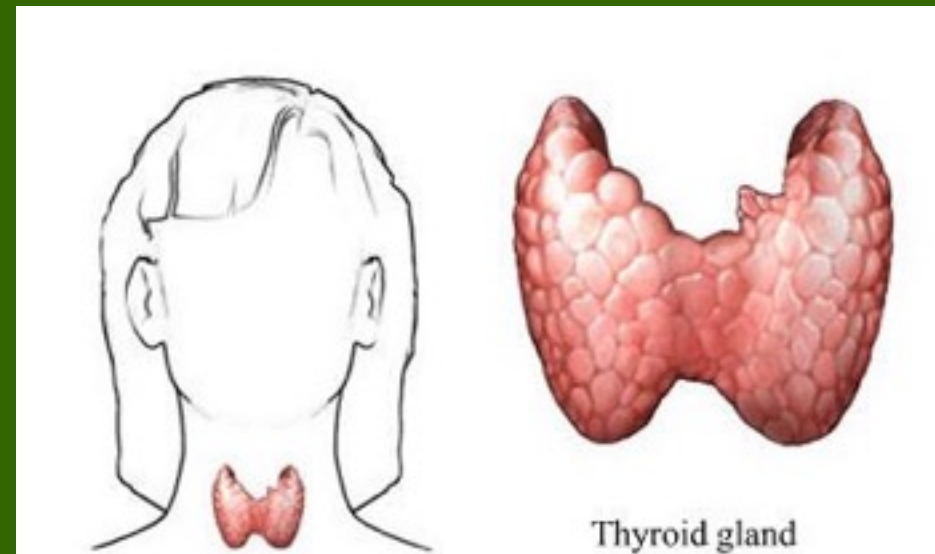
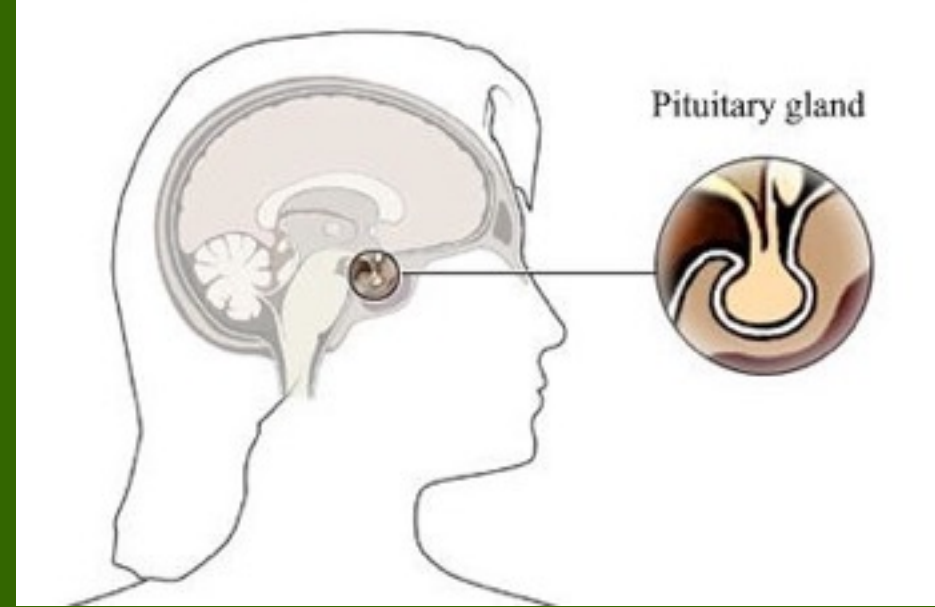
# Nutritional Effects on Bone

- Normal bone growth/maintenance cannot occur w/o sufficient dietary intake of calcium and phosphate salts.
- Calcium and phosphate are not absorbed in the intestine unless the hormone **calcitriol** is present. Calcitriol synthesis is dependent on the availability of the steroid **cholecalciferol (a.k.a. Vitamin D)** which may be synthesized in the skin or obtained from the diet.
- Vitamins C, A, K, and B<sub>12</sub> are all necessary for bone growth as well.



# Hormonal Effects on Bone

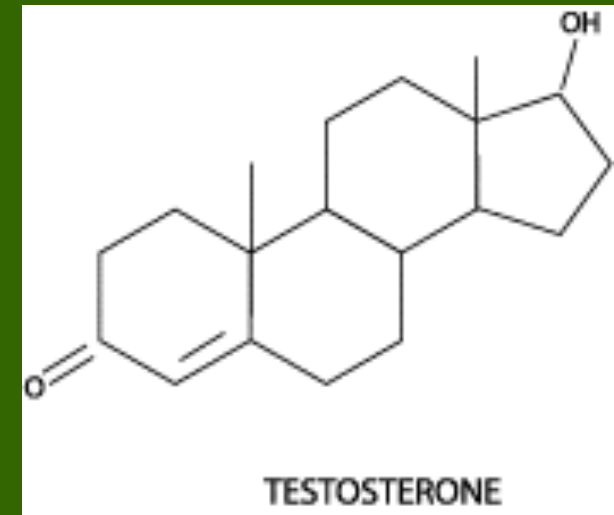
- **Growth hormone**, produced by the pituitary gland, and **thyroxine**, produced by the thyroid gland, stimulate bone growth.
  - GH stimulates protein synthesis and cell growth throughout the body.
  - Thyroxine stimulates cell metabolism and increases the rate of osteoblast activity.
  - In proper balance, these hormones maintain normal activity of the epiphyseal plate (*what would you consider normal activity?*) until roughly the time of puberty.





# Hormonal Effects on Bone

- At puberty, the rising levels of sex hormones (**estrogens** in females and **androgens** in males) cause osteoblasts to produce bone faster than the epiphyseal cartilage can divide. This causes the characteristic growth spurt as well as the ultimate closure of the epiphyseal plate.
- Estrogens cause faster closure of the epiphyseal growth plate than do androgens.
- Estrogen also acts to stimulate osteoblast activity.



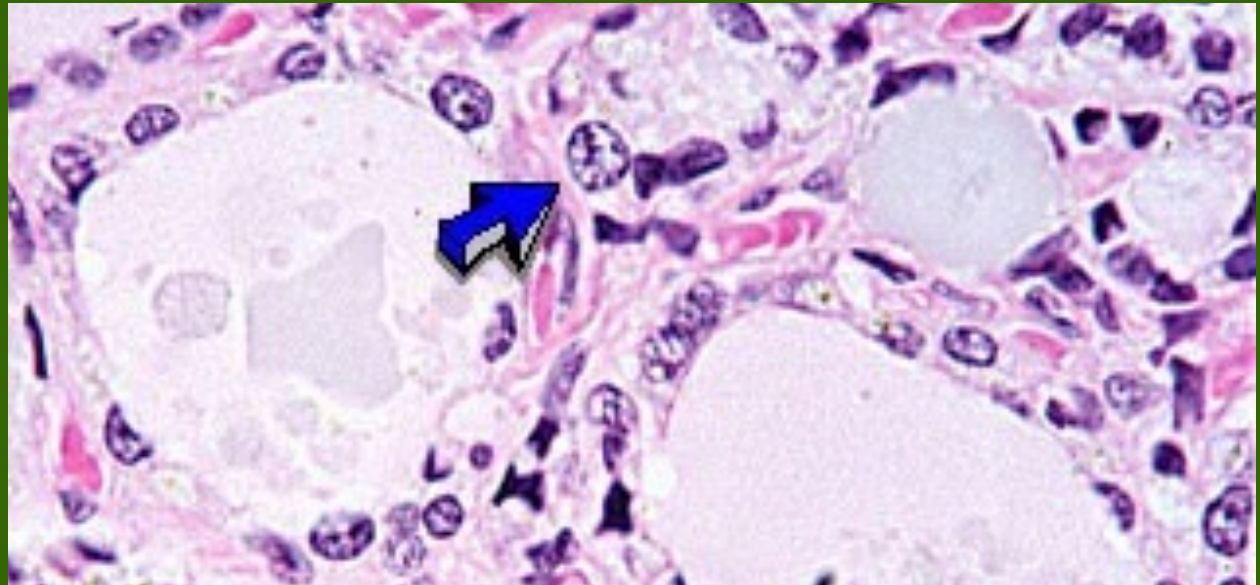
# Hormonal Effects on Bone

- Other hormones that affect bone growth include **insulin** and the **glucocorticoids**.
  - Insulin stimulates bone formation
  - Glucocorticoids inhibit osteoclast activity.
- **Parathyroid hormone** and **calcitonin** are 2 hormones that antagonistically maintain blood  $[Ca^{2+}]$  at homeostatic levels.
  - Since the skeleton is the body's major calcium reservoir, the activity of these 2 hormones affects bone resorption and deposition.

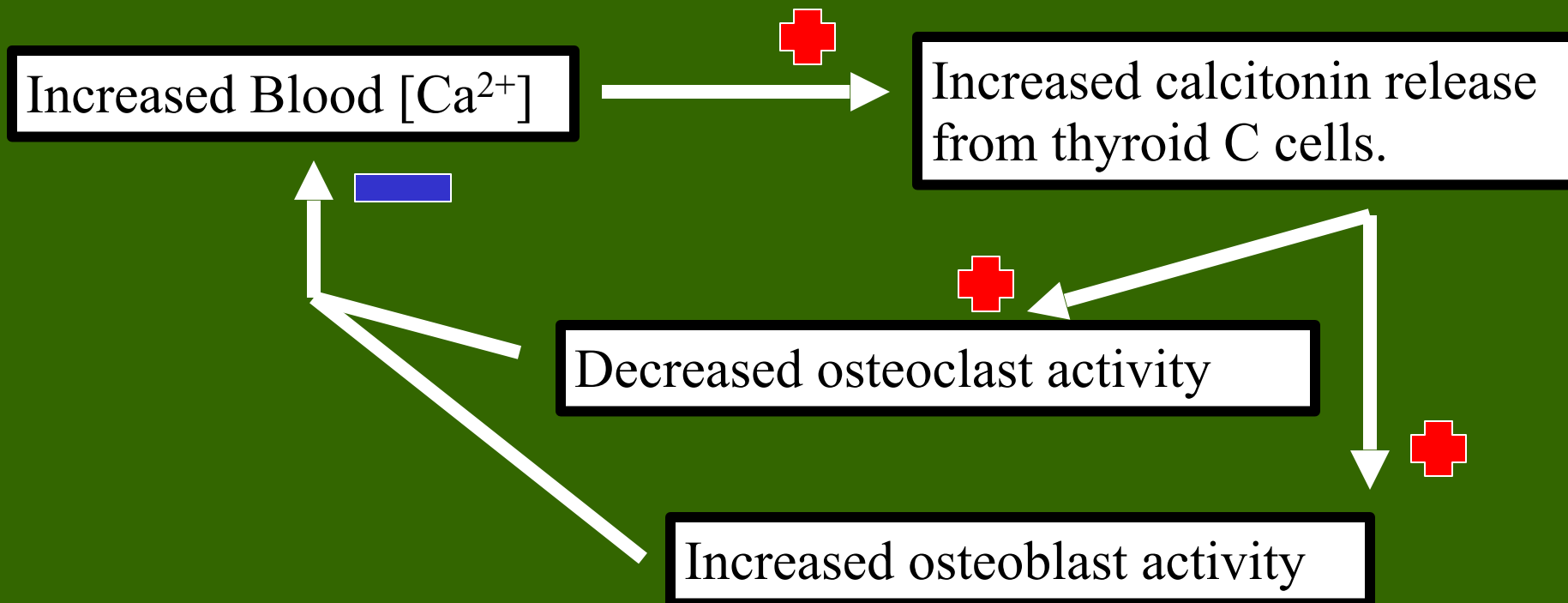
# Calcitonin

- Released by the C cells of the thyroid gland in response to high blood  $[Ca^{2+}]$ .
- Calcitonin acts to “*tone down*” blood calcium levels.
- Calcitonin causes decreased osteoclast activity which results in decreased break down of bone matrix and decreased calcium being released into the blood.
- Calcitonin also stimulates osteoblast activity which means calcium will be taken from the blood and deposited as bone matrix.

**Notice the thyroid follicles on the right. The arrow indicates a C cell**

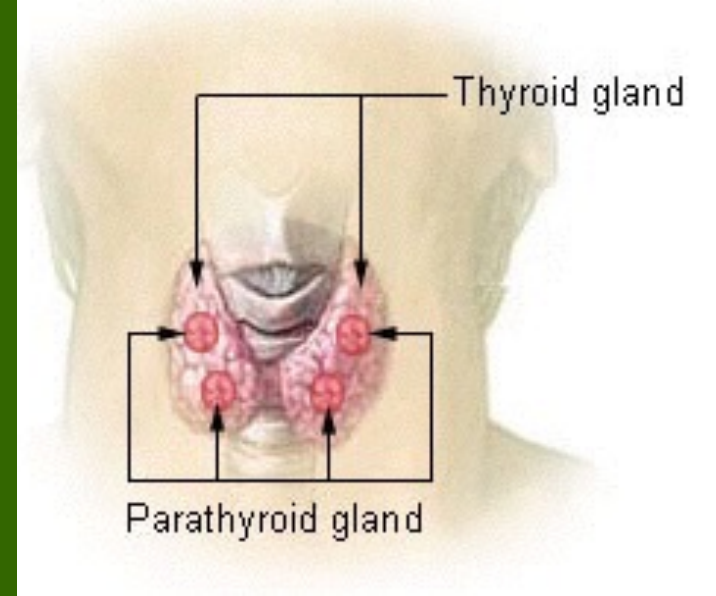


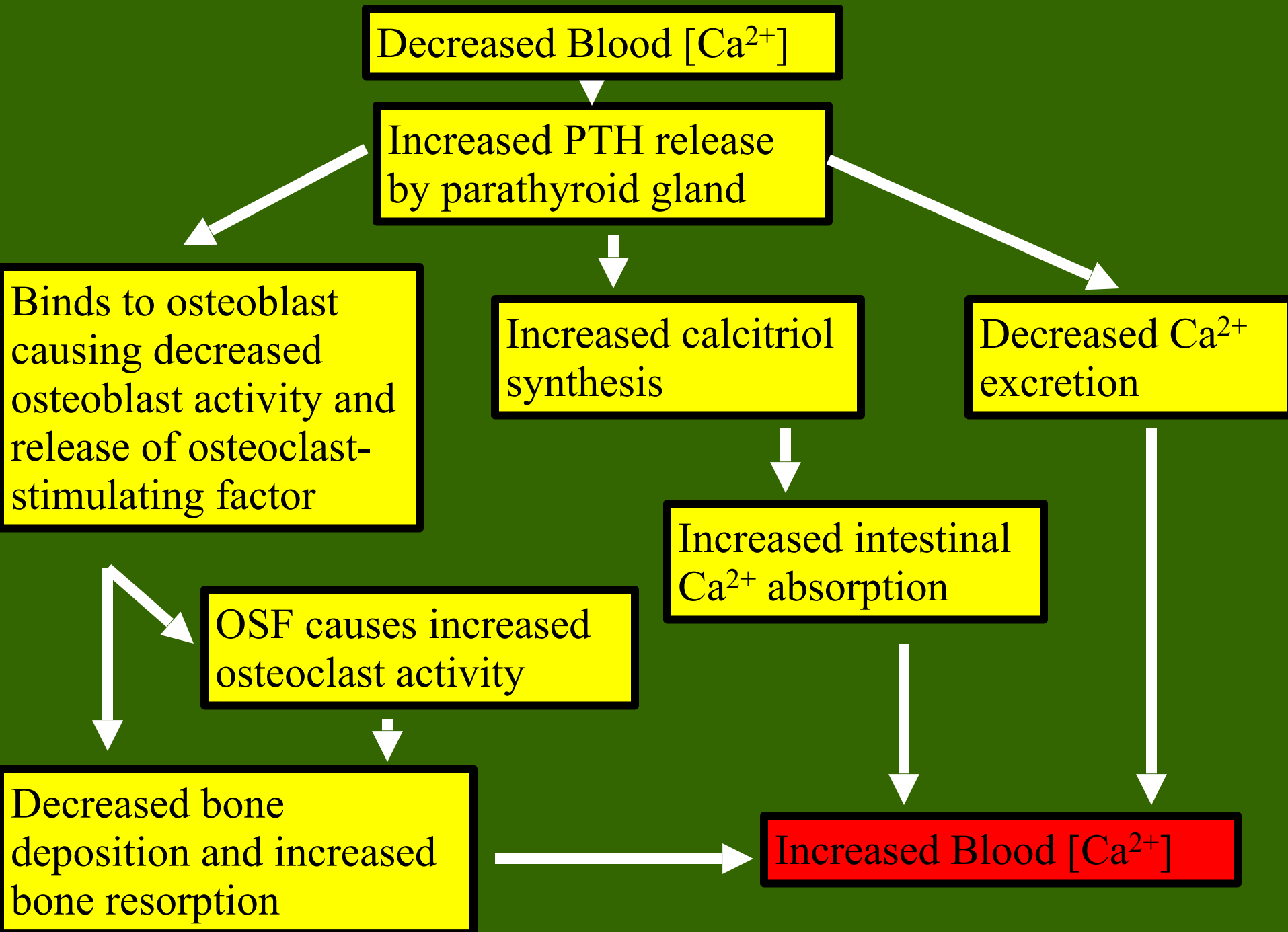
# Calcitonin Negative Feedback Loop



# Parathyroid Hormone

- Released by the cells of the parathyroid gland in response to low blood  $[Ca^{2+}]$ . Causes blood  $[Ca^{2+}]$  to increase.
- PTH will bind to osteoblasts and this will cause 2 things to occur:
  - The osteoblasts will decrease their activity and they will release a chemical known as *osteoclast-stimulating factor*.
  - Osteoclast-stimulating factor will increase osteoclast activity.
- PTH increases calcitriol synthesis which increases  $Ca^{2+}$  absorption in the small intestine.
- PTH decreases urinary  $Ca^{2+}$  excretion and increases urinary phosphate excretion.





# Clinical Conditions

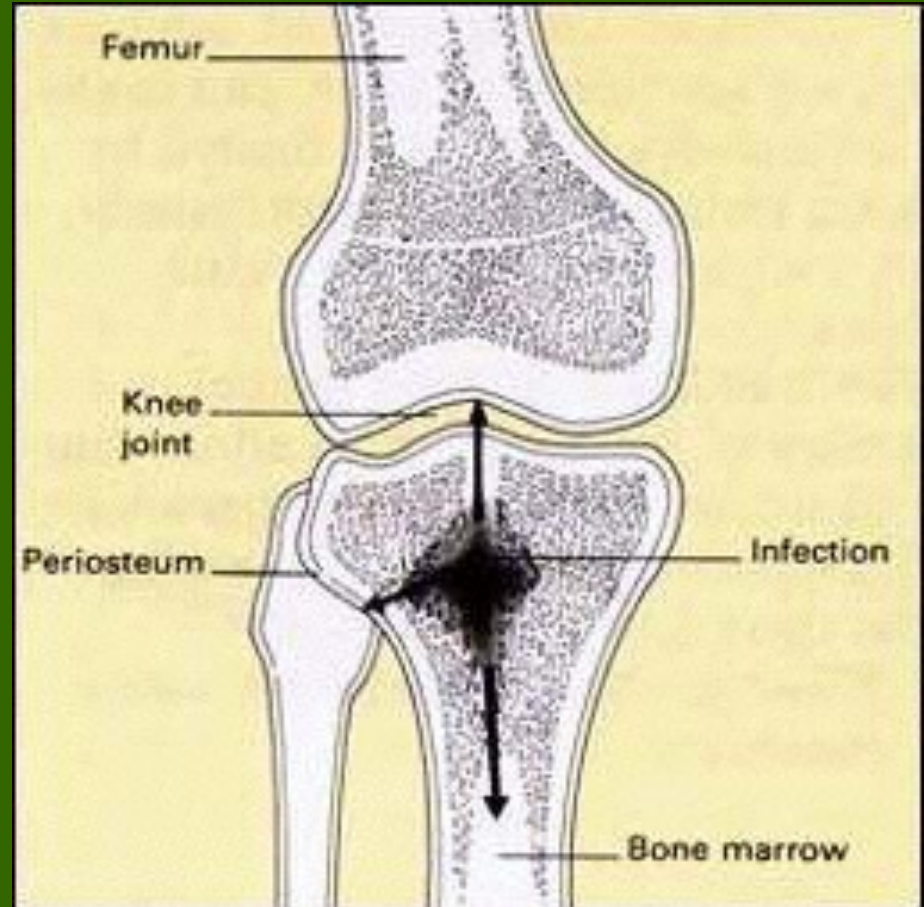
- **Osteomalacia**
  - Literally “soft bones.”
  - Includes many disorders in which osteoid is produced but inadequately mineralized.
    - Causes can include insufficient dietary calcium
    - Insufficient vitamin D fortification or insufficient exposure to sun light.
- **Rickets**
  - Children's form of osteomalacia
  - More detrimental due to the fact that their bones are still growing.
  - Signs include bowed legs, and deformities of the pelvis, ribs, and skull.



What about the above x-ray is indicative of rickets?

# Clinical Conditions

- **Osteomyelitis**
  - Osteo=bone + myelo=marrow + itis=inflammation.
  - Inflammation of bone and bone marrow caused by pus-forming bacteria that enter the body via a wound (e.g., compound fracture) or migrate from a nearby infection.
  - Fatal before the advent of antibiotics.

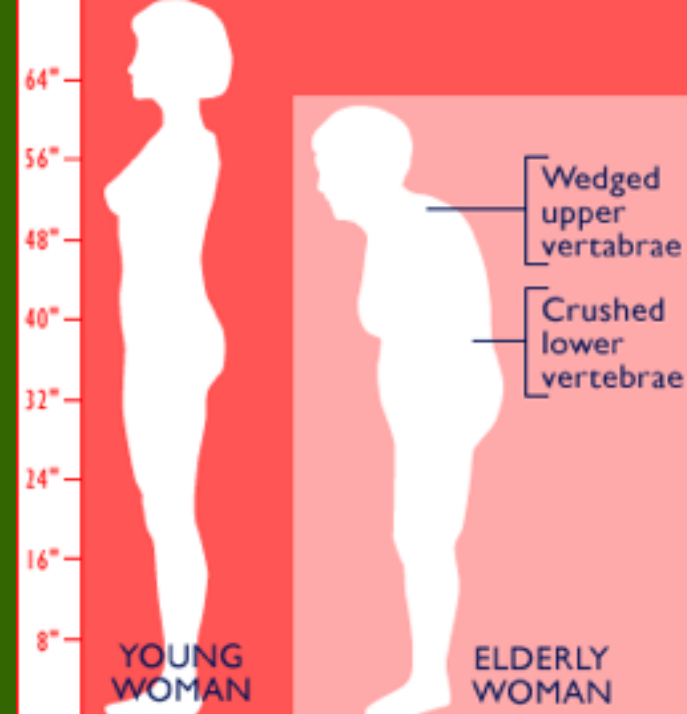




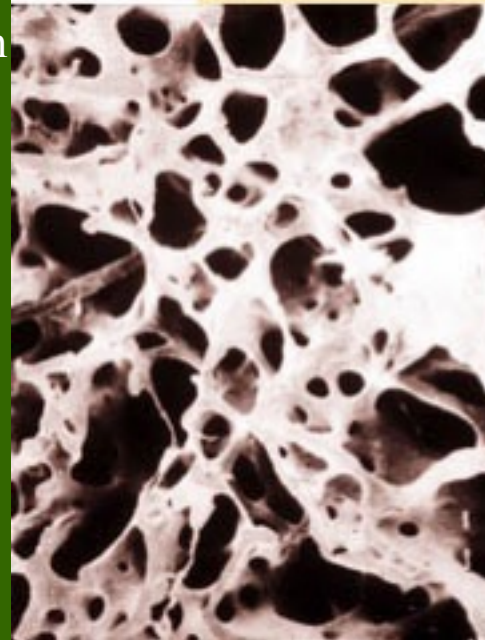
# Clinical Conditions

- **Osteoporosis**

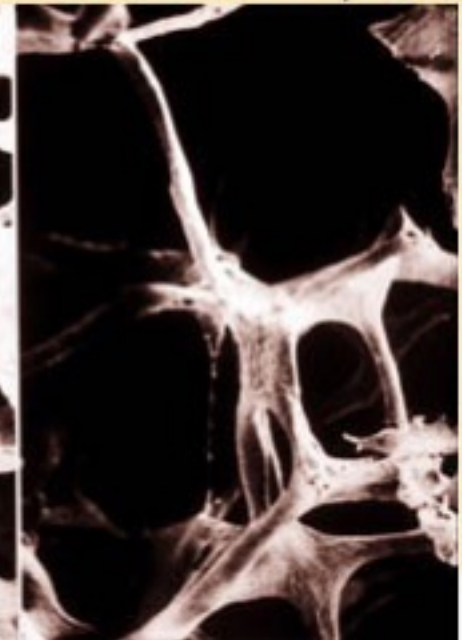
- Group of diseases in which bone resorption occurs at a faster rate than bone deposition.
- Bone mass drops and bones become increasingly porous.
- Compression fractures of the vertebrae and fractures of the femur are common.
- Often seen in postmenopausal women because they experience a rapid decline in estrogen secretion; estrogen stimulates osteoblast and inhibits osteoclast activity.
  - Based on the above, what preventative measures might you suggest?



Normal Bone



Osteoporosis



# Clinical Conditions

- **Gigantism**

- Childhood hypersecretion of growth hormone by the pituitary gland causes excessive growth.



- **Acromegaly**

- Adulthood hypersecretion of GH causes overgrowth of bony areas still responsive to GH such as the bones of the face, feet, and hands.

- **Pituitary dwarfism**

- GH deficiency in children resulting in extremely short long bones and maximum stature of 4 feet.

