

Muscle Tissue

Types

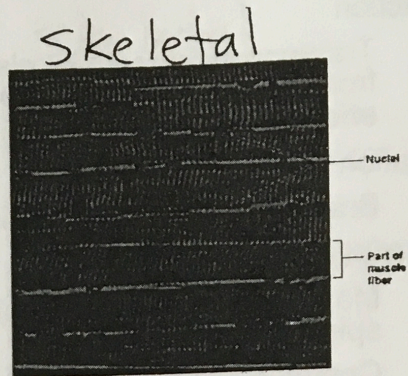
1. Skeletal muscle
2. cardiac muscle
3. smooth muscle

Skeletal Muscle Tissue

Characteristics: Multinucleate; obvious striations

Function: Voluntary movement

Location: Skeletal muscles attached to bones (occasionally to skin)

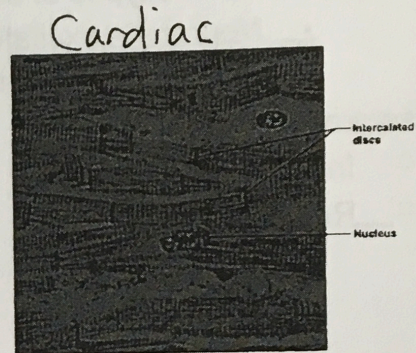


Cardiac Muscle Tissue

Function: contracts to propel blood into circulatory system

Characteristics: Uni-nucleate; intercalated discs

Location: occurs in walls of heart



Smooth Muscle Tissue

Characteristics: no striations

Function: propels substances along internal passageways; involuntary control

Location: mostly walls of hollow organs

